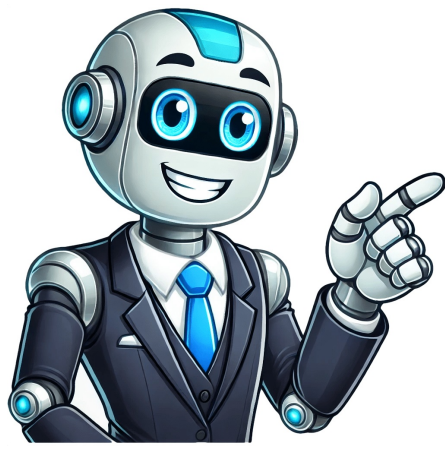


Click to verify



2025 honda cr-v

The 2025 Honda CR-VCanadian built with domestic and imported parts.*With domestic and imported parts. **Based on hybrid vehicle sales in Canada from January 1, 2024 - December 31, 2024 as reported by Desrosiers (U.S. model shown. Timeless Design. Endless Possibilities. Capability has never looked so good.Accessorized model shown A second CR-V Hybrid option with a 2.0-litre, 4-cylinder Atkinson cycle engine coupled with two electric motors, 18" aluminum-alloy wheels, perforated leather-trimmed seating surfaces, a 9" Display Audio System*, front & rear USB ports* , and wireless charging. It takes power, comfort, and fuel efficiency to the next level. It not only gives the CR-V a brawny look, but adds function to form with the active shutter lower front grille that's engineered to help enhance aerodynamics by closing and opening when the underhood system needs more cooling air.U.S. Model Shown All Honda CR-V trims come with all-season tires. All you'll need to decide is: 17" steel rims or available 18" or 19" aluminum-alloy rims in black or silver. Any which way, you'll know you can rely on the CR-V to get you there, wherever "there" is. Added peace of mind is key in the CR-V. That's why it's equipped with LED high- and low-beam headlights with auto-on/off, Daytime Running Lights (DRL), and taillights. All specially-engineered to give you enhanced visibility so you can brave the elements with confidence.U.S. Model Shown At the simple push of a button, the available one-touch power moonroof with tilt feature will fully open or close. The tilt feature allows for controlled ventilation and the slide shade lets you control the amount of light you let in, enabling you to enjoy your journey, your way.U.S. Model ShownCR-V Sport Touring Hybrid U.S. model shown for informational purposes only. Some packages, wheels and/or colour combinations shown may be unavailable in Canada. See dealer for details.ExteriorInteriorCR-V Sport Touring Hybrid U.S. model shownBlack Leather (Perforated) with Orange Contrast Athletic Design Meets Utility The CR-V was engineered to make your life easier and your adventures better.US model shown. Make packing easy with the standard 60/40 split fold-down rear seatback and the available power tailgate with programmable height. Plus, add even more cargo volume with the two-level adjustable cargo floor height on all gas-only CR-V models. U.S. model shown. For those trips with extra passengers, every CR-V trim is big on room. And even though they might not be in the driver's seat, they'll enjoy the ride just as much, with generous rear seat legroom and a spacious interior that provides at-home comfort on the road. Whether it's hot or cold out, the dual-zone automatic climate control is designed to help keep driver and copilot at their optimal temp. And on those extra cold days, the heated front seats and available heated rear seats help ensure all passengers are all comfortable all the time. With a heated leather-wrapped steering wheel, a leather-wrapped shift knob, and two-tone perforated leather-trimmed seating surfaces with orange contrast stitching all available, the interior of the CR-V is brimming with the type of comfort that makes even your longest adventures, well... comfortable. Make packing easy with the standard 60/40 split fold-down rear seatback and the available power tailgate with programmable height. Plus, add even more cargo volume with the two-level adjustable cargo floor height on all gas-only CR-V models. U.S. model shown.A Crossover SUV Engineered to Perform Designed to match your work and play ethic, the CR-V is here to help you get it all done. Accessorized model shown. Every gas-only CR-V model boasts a 1.5-litre turbocharged 4-cylinder engine that produces 190 horsepower* and 179 lb.-ft of torque*, while the CR-V Hybrid models have a 2.0-litre, 4-cylinder Atkinson cycle engine coupled with two electric motors that generate a combined 204 horsepower* and 247 lb.-ft. of torque*. All engineered to empower your drive.Fuel-Efficient & Economical The CR-V always keeps fuel efficiency in mind, with combined fuel consumption rates of 7.6L & 8.4L/100km* (2WD/Real Time AWD™ – gas only) and 6.4L/100km* (Real Time AWD™ – Hybrids). Couple that with an Eco Assist™ system that helps you keep an eye on how efficiently you're driving and an ECON drive mode button that helps ensure you get more out of every litre, you know you can rely on the CR-V to help make every adventure a more fuel-efficient one. Can you rely on the CR-V to give you great drivability? With four drive modes (Normal, ECON, Snow, and available Sport) and the Drive-by-Wire Throttle System™ that enhances smooth acceleration, Yes You Can. In any condition, the CR-V is confident. The available Real Time AWD™ with Intelligent Control System™™ is engineered to give a solid ride by delivering an intuitive response when loss of traction is detected. The system was built to automatically transfers torque to the wheels to help you focus on the road.Our Technology Staying connected to your CR-V and your compatible devices is easy. The 7" colour touchscreen is your portal to the centralized system that controls your settings and the loads of tech features in your CR-V. And, if you go with the available 9" colour touchscreen, you'll also get features like the 12-speaker BOSE® system (including a subwoofer) and the Honda Satellite-Linked Navigation System™™ with bilingual Voice Recognition. Skip the hassle and risk of fumbling with cords by charging your compatible smartphone with the available wireless charging pad. Every CR-V trim comes with a 7" colour TFT centre meter display with Driver Information Interface which conveniently indicates essential info: speedometer, odometer, fuel consumption, battery charge (on hybrid models), and more. It even connects you to your music and navigation system, all with a touch of a button on the steering wheel. The 7" colour touchscreen is your portal to the centralized system that controls your settings and the loads of tech features in your CR-V. And, if you go with the available 9" colour touchscreen, you'll also get features like the 12-speaker BOSE® system (including a subwoofer) and the Honda Satellite-Linked Navigation System™™ with bilingual Voice Recognition.Tech Designed to Help Keep You Safe The CR-V has intuitive technologies designed to help keep you, and everyone around you, safer. The LKAS* is engineered to gently correct your steering if you begin to leave a detected lane without signalling, applying torque progressively to the steering to help guide you back to the centre of the lane.Honda Accord and/or 2022 Honda CR-V model shown for illustrative purposes only. The FCW system* is designed to detect the presence of vehicles in front of you and issue audible, visual, and tactile alerts if you're approaching with too much speed. If you fail to respond, CMBS® is triggered into operation.U.S. model shown for illustrative purposes only. To help reduce the likelihood or severity of a frontal impact, CMBS®* is engineered to apply light brake pressure if you don't respond to FCW system alerts. If it still senses an imminent collision, CMBS® is designed to brake forcefully.Honda Accord and/or 2022 Honda CR-V model shown for illustrative purposes only. The LDW system* is designed to monitor vehicle lane position and issue visual and tactile alerts if your vehicle drifts into another detected lane without signalling.2022 Honda CR-V model shown for illustrative purposes only. The RDM system* is designed to help steer and even apply brake pressure if it detects your vehicle may leave the road.Honda Accord and/or 2022 Honda CR-V model shown for illustrative purposes only. The ACC system* with Low-Speed Follow is designed to keep a constant speed and set following interval behind the vehicle detected directly ahead of yours, including the ability to slow, stop, and start with the flow of traffic. Vehicle Stability Assist* with Traction Control is designed to sense and help correct oversteer and understeer scenarios to enhance handling and cornering stability, while Traction Control is designed to minimize wheel spin when accelerating on loose or slippery surfaces, helping to inspire greater driver confidence. When driving down steep hills, where engine braking doesn't slow the vehicle down enough, hill descent control is engineered to help maintain a constant speed without the need to push on the brake pedal.U.S. model shown for illustrative purposes only. The highly innovative Advanced Compatibility Engineering™ (ACE™) body structure is engineered to help disperse frontal impact energy to enhance occupant protection, while more effectively controlling it in severe collisions, to help prevent intrusion into the passenger cabin. Every CR-V trim features advanced front airbags as well as side curtain airbags with a rollover sensor system designed to deploy the side curtain airbags if a rollover is detected. Plus, it has rear outboard passengers' side airbags, which are designed to deploy in a manner that mitigates the risk of injury to out-of-position or smaller occupants. The LKAS* is engineered to gently correct your steering if you begin to leave a detected lane without signalling, applying torque progressively to the steering to help guide you back to the centre of the lane.Honda Accord and/or 2022 Honda CR-V model shown for illustrative purposes only. The FCW system* is designed to detect the presence of vehicles in front of you and issue audible, visual, and tactile alerts if you're approaching with too much speed. If you fail to respond, CMBS® is triggered into operation.U.S. model shown for illustrative purposes only. To help reduce the likelihood or severity of a frontal impact, CMBS®* is engineered to apply light brake pressure if you don't respond to FCW system alerts. If it still senses an imminent collision, CMBS® is designed to brake forcefully.Honda Accord and/or 2022 Honda CR-V model shown for illustrative purposes only. The LDW system* is designed to monitor vehicle lane position and issue visual and tactile alerts if your vehicle drifts into another detected lane without signalling.2022 Honda CR-V model shown for illustrative purposes only. The RDM system* is designed to help steer and even apply brake pressure if it detects your vehicle may leave the road.Honda Accord and/or 2022 Honda CR-V model shown for illustrative purposes only. The ACC system* with Low-Speed Follow is designed to keep a constant speed and set following interval behind the vehicle detected directly ahead of yours, including the ability to slow, stop, and start with the flow of traffic. Sign up and be the first to receive exciting updates on Honda vehicles, offers, and the latest news. The Motorsport Images Collections captures events from 1895 to today's most recent coverage.Discover The CollectionCurated, compelling, and worth your time. Explore our latest gallery of Editors' Picks.Browse Editors' FavoritesExperience AI-Powered CreativityThe Motorsport Images Collections captures events from 1895 to today's most recent coverage.Discover The CollectionCurated, compelling, and worth your time. Explore our latest gallery of Editors' Picks.Browse Editors' FavoritesExperience AI-Powered CreativityShare — copy and redistribute the material in any medium or format for any purpose, even commercially. Adapt — remix, transform, and build upon the material for any purpose, even commercially. The licensor cannot revoke these freedoms as long as you follow the license terms. Attribution — You must give appropriate credit , provide a link to the license, and indicate if changes were made. You may do so in any reasonable manner, but not in any way that suggests the licensor endorses you or your use. ShareAlike — If you remix, transform, or build upon the material, you must distribute your contributions under the same license as the original. No additional restrictions — You may not apply legal terms or technological measures that legally restrict others from doing anything the license permits. You do not have to comply with the license for elements of the material in the public domain or where your use is permitted by an applicable exception or limitation . No warranties are given. The license may not give you all of the permissions necessary for your intended use. For example, other rights such as publicity, privacy, or moral rights may limit how you use the material. 2025 HONDA CR-VSPECIFICATIONS & FEATURES LX EX EX-L Sport Sport-L Sport Touring POWER UNIT ENGINE Engine Type 1.5L DI VTEC Turbo