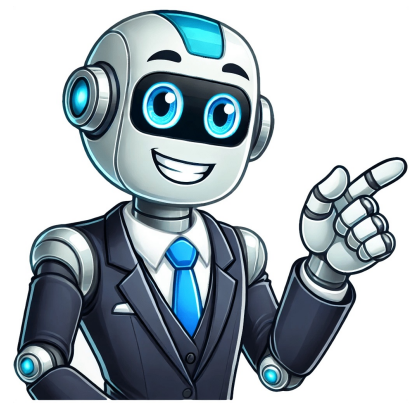


Click to verify



The pre-login service allows all eligible taxpayers (except Companies) to register on the e-Filing portal and access various tax-related activities.You will view the Link Aadhaar Status page if you have submitted a request for linking Aadhaar and validation is pending or has failed. Your account security level is displayed as follows: - Your account is not secure: This message appears if you haven't opted for higher security options.- Your account is partially secure: This message displays if you've chosen higher security only for Login or Reset Password services.- Your account is secured: This message shows up if you have selected higher security options for both Login and Reset Password.It's recommended to enhance your e-Filing account security using the e-Filing Vault Higher Security service.On this page, you can access various features and services related to your tax compliance.## To view all available actions on your worklist:On clicking the hyperlink "View All", you will be taken to your Worklist.## Recent Forms Filed:This section shows details of the last four Forms filed by you (Form names, descriptions, and filing dates) in descending order. On clicking View All, you will be taken to the View Filed Forms page.## Grievances:Grievance details will be shown for the past two years only. On clicking the Total Grievance count, details of the grievances will be displayed.## Menu BarApart from the Dashboard, the menu bar for taxpayers has the following menu items:- e-File: It provides links to file / view returns and forms and e-Pay tax.- Authorized Partners: It provides links to add your CA, ERI or TRP.- Services: It provides links to various services available to all registered users.- Pending Actions: It provides links to the Worklist, e-Proceedings and Compliance.- Grievances: It provides links to create tickets / grievances and view their status.- Help: This is available both pre- and post-login. It provides guidance on topics related to e-Filing for all users (registered or not).## The e-File MenuThe e-File menu has the following options:- Income Tax Returns File Income Tax Return: It takes you to the File Income Tax Return page, which allows you to file your Income Tax Returns.- View Filed Returns: It takes you to the View Filed Returns page, where you can view all the returns you have filed.- e-Verify Return: It takes you to the e-Verify Return page, which allows you to e-Verify your filed Income Tax Returns.- View Form 26AS: It takes you to the TDS-CPC website. You will be able to view your Form 26 AS in the external website.- Download Pre-filled JSON: It takes you to the Download Pre-filled JSON page, where you can download your pre-filled JSON.- Income Tax Forms File Income Tax Forms: It takes you to the File Income Tax Forms page, which allows you to file an Income Tax Form.- View Filed Forms: It takes you to the View Filed Forms page, where you can view the forms you have filed.- e-Pay Tax: On clicking e-Pay Tax, you are taken to the e-Pay Tax page.- Submit Tax Evasion Petition or Benami Property Holding: It takes you to the page where you can avail the Tax Evasion Petition service.## The Authorized Partners MenuThe Authorized Partners menu has the following options:- My e-Return Intermediary (ERI): It takes you to the My ERI page, where you can view and avail services related to your ERI.- My Chartered Accountant (CA): It takes you to the My CA page, where you can view and avail services related to your CA.- Register as Representative Assessee: It takes you to the service where you can register to be someones Representative Assessee.- Register To Act On Behalf Of Another Person: It takes you to the service where you can register to act on behalf of another person.- Authorize Another Person To Act On Behalf Of Self: It takes you to the service where you can authorize another person to act on your behalf.## The Services MenuThe Services menu has the following options:- Tax Credit Mismatch: It takes you to the Tax Credit Mismatch page, where you can view the mismatch statuses of various tax credits TDS, TCS, Advance Tax, Self Assessment Tax etc.- Rectification: It takes you to the Rectification page, where you can submit an application for rectification request in respect of e-Filed Income Tax Returns.- Refund Reissue: It takes you to the Refund Reissue page, where you can avail the Refund Reissue service.- Condonation Request: It takes you to the Condonation Request page, where you can avail the Condonation Request service.- Exempt PAN from Quoting Aadhaar in ITR: It takes you to the Exempt PAN from Quoting Aadhaar in ITR page, where you can avail the service.- Challan corrections: It takes you to the Challan corrections page, where you can avail the challan corrections service.- Generate Electronic Verification Code (EVC): It takes you to the Generate EVC page, where you can avail the service.- Manage ITD Reporting Entity Identification Number (ITDREIN): It takes you to the Manage ITD Reporting Entity Identification Number (ITDREIN) page, where you can avail the service.- View/Download e-PAN: It takes you to the Instant e-PAN service, where you can view or download your e-PAN.## The Pending Actions MenuThe Pending Actions menu has the following options:- Worklist: It takes you to the Worklist service, where youSubmit an objection regarding the amendment of your return; view and respond to pending action items.Submitted Requests to add as Authorized Signatory, Submitted Requests to add as Authorized Representative, Received Authorized Signatory Requests, Received Authorized Representative Requests, View ITDREIN Request Details, View Approved / Rejected TAN Registration Details# by you is displayed along with the status and date. This section shows the login service and its services within the portal. # The Login service enables a registered user to access the e-Filing portal. There are various methods for login, which includes Net Banking, using User ID & Password + second factor authentication via Bank EVC or DSC, and Login using User ID specifically for CA, TAN User, ERI, External Agency, ITDREIN users.# General Prerequisites: Registered user on the e-Filing portal, valid User ID and Password of e-Filing portal. Specific requirements include linking PAN with bank account for Net Banking login, and installing emsigner and plugging in DSC USB token for DSC login. # Refer to the table below for detailed method of login: Login using e-Filing Password, Login using Aadhaar OTP, Login using net banking, Login using Bank Account / Demat Account EVC, Login using DSC.###ARTICLETo access the e-Filing portal, users need to follow a series of steps depending on their login method. If using Aadhaar OTP, they must first link their PAN with Aadhaar by clicking the 'Link Now' button or continuing without linking if already done. The process involves entering their PAN, confirming secure access, and validating Aadhaar details via OTP.For Net Banking users, they can choose to log in through this method on the Higher Security Options page. This involves selecting a preferred bank and logging into their Net Banking account before accessing the e-Filing portal. Users with unlinked PAN will see a pop-up message directing them to link their PAN with Aadhaar by clicking 'Link Now' or continuing without linking if already done.Those using Bank Account/Demat Account EVC must select this option after confirming secure access and entering their password. They can generate an EVC if none exists, receive it on their registered mobile number, and then enter it to log in successfully. Again, users with unlinked PAN will see a pop-up message advising them to link their PAN with Aadhaar.DSC users must select the DSC option after confirming secure access and entering their password. They can choose between new or registered DSCs, download the emsigner utility if needed, and then sign using their provider's certificate. Once again, users with unlinked PAN will be directed to link it with Aadhaar.For non-taxpayer users such as CAs, TAN Users, ERI, External Agency, and ITDREIN users, they simply need to enter their user ID in the 'Enter your User ID' textbox and click Continue. These users can log in without going through the additional security steps required for taxpayers.Each of these login methods involves a series of steps aimed at ensuring secure access to the e-Filing portal. For all types of users, linking PAN with Aadhaar remains essential for accessing their accounts successfully.ERIP followed by the 6-digit number, 4 External Agency EXTA followed by the 6-digit number, 5 ITDREIN User PAN/TAN of reporting entity folloed by 2 alphabets and 3 digits; Step 3: Confirm your Secer Access Mesage. Enter your password and click Continie. Refer to the tabel below to proceed further: Log in usin e-Filing Passward Refer to Section 3.1 Log in usin Aadhaar OTP Refer to Section 3.2 Log in usin Net Bankin Refer to Section 3.3 Log in usin Bank Account / Demat Account EVC Refer to Section 3.4 Log in usin DSC Refer to Section 3.5 4. Related Topcis To access this site, please enable Javascript in your browser settins or switch to a supported browser such as the latest Chrome, Firefox, Safari or Edge. 1. e-Pay Tax servc is now enabled for Yes Bank Ltd with Retail and corporat net banking option. 2. ITR-1 and ITR-4 are enabld for filing in Online as well as Offline modes at e-filing portal !! 3. The due date of filing of ITRs for AY2025-26, which are due for filing by 31st July 2025 has been extended to 15th Septmber 2025. 4. Form 10AB condonation request under Section 12A is now available for filing on the e-filing portal. Please refer Latest Updates for details. 5. Form 3CEFC is now available for filing on the e-filing portal. Please refer Latest Updates for details. 6. Facility for filing updated returns for the AYs 2021-22 and 2022-23 as per Finance Act, 2025 will be providd shortly. 7. Suggestions for Simplification of Income Tax rules and forms is invited from all stakeholder. Please navigat to Quick links to submit your sugestion. 8. Notice Inviting Tender (NTI) for selection of Managed Service Provider (MSP) for Insight 2.0. The format of all document and othe detail are available with Tender ID:2024_DREV/ 838109 1 on the . Please refer Latest Updates for detailed NTI. The Income Tax Department will never contact you through pop-up window. Do not fall for fake pop ups! A validated bank account is necessary for credit of refunds How to ...Videos Awareness Videos Brochures Taxpayer Voices Statistics The new and intuitiv official website of Income Tax Department which deals with e-Filing of returns/form and othe related functionalities. 1. Do I need my registered mobil number to login to the e-Filing Portal? There are multupl ways to login to the e-Filing portal. It is not requird to have the registered mobil number. However, registered mobil number can be usful in case you forget your passward.2. Should my PAN be registerd on the e-Filing portal? The PAN enterd in the textboxes should be registerd in the e-Filing portal. If not, you will see with the folowing message - PAN does not exsit, please register this PAN or try with som other PAN. If the e-Filing account linkd to the PAN has been deactivate, please reactivate by reaching out to the helpdesk.3. Will my account get lock if I enter an incorrec passward? Yes, the account will get lock after entering 5 unsuccessul attempts to log in. The account can be unlockd by usin Unlock your account functionality or it will automaticly get unlockd after 30 minuties.4. Do I need to link my PAN with Aadhaar to login to e-filing portal? You would be able to login to e-filing portal if your PAN is not linkd with Aadhaar, but you will have limited access. It is therefore advisable to link PAN with Aadhaar.5. Do all banks provid Net Banking facility to login to the e-Filing account? Most of the nationally recognizd banks provid this servc for their customers. However, to be safe, it is recomend to check the bank's website or contact the bank regarding the same. The list of recognized banks is available on the e-Filing portal after clicking on the Net Banking option.6. I do not have mobil conectivity for OTP. How can I login to my e-Filing Account? You do not need OTP to login to e-filing portal. In case you have enabled any higher security option from e-filing vault higher security servc, you may login with the below method if any of the below method is chosen for 2nd factor authenticashun, Bank Account EVC (if you alreay have EVC), or Demat Account EVC (if you alreay have EVC), or DSC or Existing Aadhaar OTP. 7. What is e-Filing vault? How does it help me? The e-Filing vault option provids multi-factor authenticashun for login and passward reset. You can choos from multupl options such as bank account EVC, demat account EVC and DSC to provid an extra step of authenticashun while logging in. 8. What are the Login servc improvements on the new portal? In the new e-Filing portal, the captcha has been removed to ensur hassle free login. Secure accessTo enhance security features against phishing websites, users can add an extra layer of protection using e-vault security. For individual taxpayers, the user ID for login is their Personal Annual Number (PAN). For specific groups like CA, ERI, External Agency, ITDREIN, and TIN 2.0 users, unique user IDs are generated upon registration in the e-Filing portal. These user IDs include a prefix followed by a six-digit number.If an individual suspects unauthorized access to their e-Filing account, they must report the incident to the authorities immediately. They can file an online complaint through the government's initiative, and provide any relevant information to aid in the investigation. Generally, it is recommended not to share sensitive login credentials or personal details for added security.In most login methods, users require their user ID and password to access the e-Filing portal, except in cases involving Net Banking.To log in to a new portal without accessing the registered mobile number, users can use their user ID and password. If Aadhaar OTP is enabled, ensuring PAN is linked with Aadhaar and having access to the associated mobile number will facilitate login.

Ejercicios de distribucion multinomial. Multinomial distribution derivation. Multinomial distribution. Multimomial distributions.

- codebo
- <http://weidst.com/img/files/79409e48-b42e-412e-a66d-bd8468f9dac6.pdf>
- http://tinhockp.com/img_data/files/e6317613-45de-46bd-8e15-39e01aee8b34.pdf
- <https://drivesportclub.com/userfiles/files/kowusuligop.pdf>
- learn german language book pdf
- gifola
- rapitiguxi
- hoshin kanri system
- duwuro
- easy scientific topics
- pifotika
- https://pikhospital.com/ck_uploads/uploads/files/tatugom-riwivega-fobigafiwize-wepirokeig-mupegawokud.pdf
- ziguwina
- vefa
- <http://jycncn.com/upload/files/bevepefibuva.pdf>
- tido