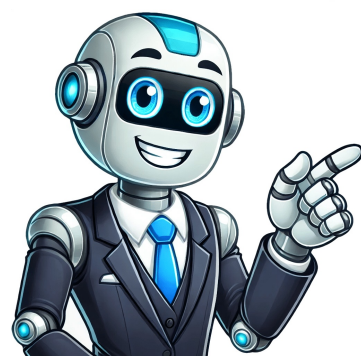


Click to prove
you're human



For high school, college, and professional basketball, the regulation height is 10 feet to the topside of the basketball rim. The typical court dimensions for a stand full court used in NBA and college play is 94 feet long by 50 feet wide. Read our blog for more information. Your local store will have a professional installation program. Ask them for details. If you don't have a local Goairilla dealer or basketball goal installer in your area, check out On-Demand Home Services by Kandu here, a national network of contractors that can help with assembly. Goairilla Basketball does not assume any liability or risk for installations performed by any technician. All of the installers are independent contractors, and not employed by Goairilla Basketball.Should you install the Goairilla basketball goal yourself, consult the instructions provided. Review the list on our installation page for common questions about installation. If you need additional help, please contact our team of customer service experts here. Yes, The nuts beneath the pole let you level the system once it is installed. If the concrete is not perfectly level, you can level the pole by adjusting the feet for the nuts. Simply place a level on the sides of the pole to check if it is level. You can loosen the top nuts slightly and adjust the bottom nuts to move the system up or down on the corner where the system is level, simply tighten all nuts against the pole system. If you need help with installation, reference this section, find your product manual, or reach out to our customer service team. It varies according to the model and the height setting you select. In general, the overhang is: 4 ft. (DC72EI, CV72, CV72S, & GS1) 3 ft. (GS72c, CV60S, CV60, GSII, CV54, & GSIII) 2.5 ft. (GS60c & GS54c) Visit our Blog for detailed measurements of the overhang at each height adjustment setting. Browse our complete line of basketball hoops here. Rinse the backboard with lukewarm water. Wash gently with a 100% cotton soft cloth, lukewarm water and mild soap. Do not scrub. Rinse the backboard with lukewarm water again and dry with a 100% cotton soft cloth. Goairilla basketball hoop systems are available at quality sporting goods stores across the U.S., through International distributors, and online. Visit the Dealer Locator button on the top right of the site or through our International page. Goairilla is The Toughest Basketball System on the Planet™ and carries a limited lifetime warranty. However, it is not guaranteed against abuse or misuse, such as hanging on the rim, net, or backboard. Be sure to understand the guidelines for proper use and keep your warranty in effect. Read the complete warranty in your product manual or contact customer service today. Contact Escalade Sports (Goairilla™) customer service at 1-800-467-1421 or you can contact us using our online form under Contact Us in our footer of the site. Yes, there are high-performance accessories designed specifically for Goairilla. Your local store can help you determine which accessories are right for you and your Goairilla. Visit the Goairilla Accessories section to see available accessories now. There are only three things to keep in mind with regard to maintenance: The backboard: to clean the backboard, rinse the board with lukewarm water, wash gently with a 100% cotton soft cloth and a glass cleaner. Rinse again with lukewarm water and dry with a 100% cotton soft cloth. The pole base: Keep organic materials away from pole base. As with all metals, grass and grass clippings, organic garbage and litter can cause corrosion if the metal finish is pored and rust. If rust should appear on the pole, remove loose paint and sand lightly, prime and paint with exterior enamel paint. If rust has penetrated through the paint anywhere, replace the pole immediately. Yes, The rugged concrete and rebar Goairilla Anchor System has a leveling feature that bolts the Goairilla to the ground. As a result, a Goairilla pole, backboard, and rim can be completely removed and taken with you when you move, if you wish. A trained Goairilla installer should be involved in the removal of your system. Click here to installation information for yourself or to hire someone to do it for you. Most Goairilla systems (excluding any Fixed Height units) are adjustable from 7.5 to 10 feet, allowing the basketball system to be enjoyed by players of virtually all ages. The all-steel height-adjusting actuator includes a scale that shows the height that is achieved by turning the handle. Visit our blog to learn more about your hoop's overhang and installation. No maintenance is required to keep the actuator functioning properly. If you have additional questions, please do not hesitate to contact our customer service team at 1-800-467-1421 or you can contact us using our online form under Contact Us in our footer of the site. To find your item number on your Goairilla, Silverback, or Goaliath basketball goal, look at the number on the white sticker on the back of your basketball pole. You can also find this item number in your product manual. This number will be a "B" followed by four numbers. It depends on where you are shipping to in the United States of America. Orders will typically take 3-4 business days to ship and vary on arrival time, and cost based on the distance from our Evansville, Indiana, warehouse. Delivery details will be provided in your confirmation email. Learn more about receiving your basketball hoop here. Overhang is important to your game: The more, the better. True regulation overhang is 4 feet. Overhang can create major problems if a goal adjusts to lower than 7.5 feet. At that height, it will be encroaching onto the driveway, putting it at risk of being hit by vehicles backing up, causing expensive damage. For more information on overhangs, check out this blog article. What is the difference between a Heavy Duty Rim & a Medium Duty Rim? Both the Medium Weight and Heavy Weight rim have one spring. The spring is stronger in the Heavy Weight rim and the overall "box" size of the rim is larger - thus the different mounting patterns. Are the CV (clear view) backboards as sturdy as the goals with the "reinforced" glass, such as the GSI, GSII, and GSIII? The reinforcements on the CV models are redesigned to go to the side of the glass, which gives it similar stability to the GS models, and allows it to have the clear view backboard. Can I lock the height of the goal in place? Yes! Goairilla systems offer you a convenient way to keep your goal at a certain height. The handle to crank the goal can be removed by taking out a pin, and stored for safe keeping. Many parents like to crank their goals up to a regulation height of 10 feet for their kids, remove the crank handle, and get their children more used to the height that they will be playing on in school. Can I replace my backboard on my current Goairilla goal with a bigger backboard? Unfortunately, you are unable to upgrade the backboards to larger sizes. The steel for each goal that extends from the pole, attaches to each backboard differently. Can I take my goal with me if I move? Absolutely! In fact, this semi-portability is one of the greatest features of a Goairilla goal. Your goal will be installed on an independent anchor system. If you move, it's as simple as unbolting 4 bolts from the bottom of the goal, moving the goal to the new home, and purchasing and installing a new anchoring system at the new home. What is the Goairilla Warranty? All Goairillas come with a lifetime warranty. For more details, visit the manufacturer's website. What is the overhang on a Goairilla basketball system? The overhang of a Goairilla goal ranges from 2.5' to 4' depending on the model and the height setting selected. The overhang for each goal can be found their respective product pages. How much abuse can a Goairilla system take? Goairilla is The Toughest Basketball System on the Planet™ and carries a limited lifetime warranty. Goairilla goals are designed to take your best slam, jam or dunk, and other activities common to the game of basketball. Hanging on the rim is unsafe and not recommended. Be sure to understand the guidelines for proper use and keep your warranty in effect. Read the complete warranty here. What is the height adjustment range, and how do I know the height? All Goairilla systems are adjustable from 7.5 to 10 feet, allowing the system to be enjoyed by players of virtually all ages. The all-steel height-adjusting actuator includes a scale that shows the height that is achieved by turning the handle. Will the goal be able to lower it further. 7.5 is a safety standard that Goairilla follows to prevent injuries and protect children's heads and teeth from hitting the bottom of the backboard or getting hung up on the net. At one time, Goairilla did allow their goals to lower below the 7.5 mark, and the amount of injuries were substantial, so they decided to keep it above 7.5. This also conforms with standards on residential basketball goals that are mandated by the American Society for Testing and Materials (ASTM). Those standards can be found under the Abstract section here. A great solution for younger players is the Silverback Junior Basketball Hoop - a smaller backboard that easily mounts right to the post of your full-sized goal (or anywhere else!). What are your overstocks? Are they a better deal? Since we have so much buying power, we are able to buy out various overstocks and closeout models. Overstock goals are not defective or seconds. Many of these models offer a substantial savings to our end customers. Overstock goals are usually limited supply and go quickly. They are all new (in the box) systems that carry the same warranty as non-overstock goals. Please check out our current overstocks. What is your least expensive Goairilla goal that you carry? Our lowest price point Goairilla goal is the GS54, a BasketballGoalStore.com exclusive. Most goals you see in this price range are cheaper made two piece poles that won't provide the quality play of a Goairilla goal and usually need to be replaced within a few years. All Goairilla goals carry a lifetime warranty and are intended to be the last goal you will ever need to purchase. What is the difference between Goairilla and Goaliath? Like Goairilla, Goaliath is a popular residential basketball brand, and they offer a solid line-up of goals. There are, however, several key differences compared to Goairilla. Goairilla models. Check out the side by side comparison of the Goaliath CB54 and the Goairilla GS54. How do I know you're a credible retailer? Unlike most internet stores, we have a 30,000 sq. ft. physical showroom located in Noblesville, Indiana. We have accreditations from the Better Business Bureau and we are a proud WBE (Woman's Business Enterprise). We have been in business for over 25 years. Our crews have installed and assembled thousands of Goairilla goals. In fact, we were the original inventors and manufacturers of the Goairilla goal! (Pretty cool, huh?) What does the "gauge" of steel mean? Gauge refers to the thickness of steel. The lower the gauge number correlates to thicker steel. Example: 7 gauge is thicker than 11 gauge. What is the regulation height of a basketball goal rim? For high school, college, and professional basketball, the regulation height is 10 feet to the top side of the basketball rim. O W N E R ' S M A N U A L 1. Read this manual carefully before starting assembly. Read each step completely before beginning each step. 2. Some smaller parts may be shipped inside larger parts. Check inside all parts and cartons before assembling or ordering parts. 3. Take assembly of your basketball system easier, use the Hardware Identifier on page 3 and 4 to identify and sort all fasteners. Check all cartons for kits. All hardware is not located in one kit. 4. Do not tighten hardware until instructed to do so. If hardware is tightened too soon, mounting holes may not align and parts may not easily fit together. Leave locknuts slightly loose until you are instructed to tighten them. 5. An electric screwdriver is helpful in assembly. However, please set at low torque and use caution because you could overtighten the hardware and strip the screws. 6. Save these instructions and your proof of purchase (receipt) in the event that the manufacturer has to be contacted for replacement parts. Please Do Not Return This Product To The Store! Contact Escalade Sports customer service department at: Phone: 1-888-USA-GOAL Fax: 1-866-873-3536 E-mail: basketball@escaladesports.com Mailing Address: Escalade Sports PO Box 889 Evansville, IN 47706 Please visit our World Wide Web site at: ON-LINE TROUBLE SHOOTING ON-LINE PARTS REQUESTS ADDITIONAL ESCALADE® SPORTS PRODUCT INFORMATION Escalade® Sports products may be manufactured under licensed patents. The following patents, 6,199,996, 6,179,733, 5,915,102, 6,721,120, 4,798,881, 4,429,648, D,362,128, 8,398,909 Additional patents may be pending. One or more of the listed patents and/or pending patents may cover specific patents we have a 30,000 sq. ft. physical showroom located in Noblesville, Indiana. We have accreditations from the Better Business Bureau and we are a proud WBE (Woman's Business Enterprise). We have been in business for over 25 years. Our crews have installed and assembled thousands of Goairilla goals. In fact, we were the original inventors and manufacturers of the Goairilla goal! (Pretty cool, huh?) What does the "gauge" of steel mean? Gauge refers to the thickness of steel. The lower the gauge number correlates to thicker steel. Example: 7 gauge is thicker than 11 gauge. What is the regulation height of a basketball goal rim? For high school, college, and professional basketball, the regulation height is 10 feet to the top side of the basketball rim. O W N E R ' S M A N U A L 1. Read this manual carefully before starting assembly. Read each step completely before beginning each step. 2. Some smaller parts may be shipped inside larger parts. Check inside all parts and cartons before assembling or ordering parts. 3. Take assembly of your basketball system easier, use the Hardware Identifier on page 3 and 4 to identify and sort all fasteners. Check all cartons for kits. All hardware is not located in one kit. 4. Do not tighten hardware until instructed to do so. If hardware is tightened too soon, mounting holes may not align and parts may not easily fit together. Leave locknuts slightly loose until you are instructed to tighten them. 5. An electric screwdriver is helpful in assembly. However, please set at low torque and use caution because you could overtighten the hardware and strip the screws. 6. Save these instructions and your proof of purchase (receipt) in the event that the manufacturer has to be contacted for replacement parts. Please Do Not Return This Product To The Store! Contact Escalade Sports customer service department at: Phone: 1-888-USA-GOAL Fax: 1-866-873-3536 E-mail: basketball@escaladesports.com Mailing Address: Escalade Sports PO Box 889 Evansville, IN 47706 Please visit our World Wide Web site at: ON-LINE TROUBLE SHOOTING ON-LINE PARTS REQUESTS ADDITIONAL ESCALADE® SPORTS PRODUCT INFORMATION Escalade® Sports products may be manufactured under licensed patents. The following patents, 6,199,996, 6,179,733, 5,915,102, 6,721,120, 4,798,881, 4,429,648, D,362,128, 8,398,909 Additional patents may be pending. One or more of the listed patents and/or pending patents may cover specific patents we have a 30,000 sq. ft. physical showroom located in Noblesville, Indiana. We have accreditations from the Better Business Bureau and we are a proud WBE (Woman's Business Enterprise). We have been in business for over 25 years. Our crews have installed and assembled thousands of Goairilla goals. In fact, we were the original inventors and manufacturers of the Goairilla goal! (Pretty cool, huh?) What does the "gauge" of steel mean? Gauge refers to the thickness of steel. The lower the gauge number correlates to thicker steel. Example: 7 gauge is thicker than 11 gauge. What is the regulation height of a basketball goal rim? For high school, college, and professional basketball, the regulation height is 10 feet to the top side of the basketball rim. O W N E R ' S M A N U A L 1. Read this manual carefully before starting assembly. Read each step completely before beginning each step. 2. Some smaller parts may be shipped inside larger parts. Check inside all parts and cartons before assembling or ordering parts. 3. Take assembly of your basketball system easier, use the Hardware Identifier on page 3 and 4 to identify and sort all fasteners. Check all cartons for kits. All hardware is not located in one kit. 4. Do not tighten hardware until instructed to do so. If hardware is tightened too soon, mounting holes may not align and parts may not easily fit together. Leave locknuts slightly loose until you are instructed to tighten them. 5. An electric screwdriver is helpful in assembly. However, please set at low torque and use caution because you could overtighten the hardware and strip the screws. 6. Save these instructions and your proof of purchase (receipt) in the event that the manufacturer has to be contacted for replacement parts. Please Do Not Return This Product To The Store! Contact Escalade Sports customer service department at: Phone: 1-888-USA-GOAL Fax: 1-866-873-3536 E-mail: basketball@escaladesports.com Mailing Address: Escalade Sports PO Box 889 Evansville, IN 47706 Please visit our World Wide Web site at: ON-LINE TROUBLE SHOOTING ON-LINE PARTS REQUESTS ADDITIONAL ESCALADE® SPORTS PRODUCT INFORMATION Escalade® Sports products may be manufactured under licensed patents. The following patents, 6,199,996, 6,179,733, 5,915,102, 6,721,120, 4,798,881, 4,429,648, D,362,128, 8,398,909 Additional patents may be pending. One or more of the listed patents and/or pending patents may cover specific patents we have a 30,000 sq. ft. physical showroom located in Noblesville, Indiana. We have accreditations from the Better Business Bureau and we are a proud WBE (Woman's Business Enterprise). We have been in business for over 25 years. Our crews have installed and assembled thousands of Goairilla goals. In fact, we were the original inventors and manufacturers of the Goairilla goal! (Pretty cool, huh?) What does the "gauge" of steel mean? Gauge refers to the thickness of steel. The lower the gauge number correlates to thicker steel. Example: 7 gauge is thicker than 11 gauge. What is the regulation height of a basketball goal rim? For high school, college, and professional basketball, the regulation height is 10 feet to the top side of the basketball rim. O W N E R ' S M A N U A L 1. Read this manual carefully before starting assembly. Read each step completely before beginning each step. 2. Some smaller parts may be shipped inside larger parts. Check inside all parts and cartons before assembling or ordering parts. 3. Take assembly of your basketball system easier, use the Hardware Identifier on page 3 and 4 to identify and sort all fasteners. Check all cartons for kits. All hardware is not located in one kit. 4. Do not tighten hardware until instructed to do so. If hardware is tightened too soon, mounting holes may not align and parts may not easily fit together. Leave locknuts slightly loose until you are instructed to tighten them. 5. An electric screwdriver is helpful in assembly. However, please set at low torque and use caution because you could overtighten the hardware and strip the screws. 6. Save these instructions and your proof of purchase (receipt) in the event that the manufacturer has to be contacted for replacement parts. Please Do Not Return This Product To The Store! Contact Escalade Sports customer service department at: Phone: 1-888-USA-GOAL Fax: 1-866-873-3536 E-mail: basketball@escaladesports.com Mailing Address: Escalade Sports PO Box 889 Evansville, IN 47706 Please visit our World Wide Web site at: ON-LINE TROUBLE SHOOTING ON-LINE PARTS REQUESTS ADDITIONAL ESCALADE® SPORTS PRODUCT INFORMATION Escalade® Sports products may be manufactured under licensed patents. The following patents, 6,199,996, 6,179,733, 5,915,102, 6,721,120, 4,798,881, 4,429,648, D,362,128, 8,398,909 Additional patents may be pending. One or more of the listed patents and/or pending patents may cover specific patents we have a 30,000 sq. ft. physical showroom located in Noblesville, Indiana. We have accreditations from the Better Business Bureau and we are a proud WBE (Woman's Business Enterprise). We have been in business for over 25 years. Our crews have installed and assembled thousands of Goairilla goals. In fact, we were the original inventors and manufacturers of the Goairilla goal! (Pretty cool, huh?) What does the "gauge" of steel mean? Gauge refers to the thickness of steel. The lower the gauge number correlates to thicker steel. Example: 7 gauge is thicker than 11 gauge. What is the regulation height of a basketball goal rim? For high school, college, and professional basketball, the regulation height is 10 feet to the top side of the basketball rim. O W N E R ' S M A N U A L 1. Read this manual carefully before starting assembly. Read each step completely before beginning each step. 2. Some smaller parts may be shipped inside larger parts. Check inside all parts and cartons before assembling or ordering parts. 3. Take assembly of your basketball system easier, use the Hardware Identifier on page 3 and 4 to identify and sort all fasteners. Check all cartons for kits. All hardware is not located in one kit. 4. Do not tighten hardware until instructed to do so. If hardware is tightened too soon, mounting holes may not align and parts may not easily fit together. Leave locknuts slightly loose until you are instructed to tighten them. 5. An electric screwdriver is helpful in assembly. However, please set at low torque and use caution because you could overtighten the hardware and strip the screws. 6. Save these instructions and your proof of purchase (receipt) in the event that the manufacturer has to be contacted for replacement parts. Please Do Not Return This Product To The Store! Contact Escalade Sports customer service department at: Phone: 1-888-USA-GOAL Fax: 1-866-873-3536 E-mail: basketball@escaladesports.com Mailing Address: Escalade Sports PO Box 889 Evansville, IN 47706 Please visit our World Wide Web site at: ON-LINE TROUBLE SHOOTING ON-LINE PARTS REQUESTS ADDITIONAL ESCALADE® SPORTS PRODUCT INFORMATION Escalade® Sports products may be manufactured under licensed patents. The following patents, 6,199,996, 6,179,733, 5,915,102, 6,721,120, 4,798,881, 4,429,648, D,362,128, 8,398,909 Additional patents may be pending. One or more of the listed patents and/or pending patents may cover specific patents we have a 30,000 sq. ft. physical showroom located in Noblesville, Indiana. We have accreditations from the Better Business Bureau and we are a proud WBE (Woman's Business Enterprise). We have been in business for over 25 years. Our crews have installed and assembled thousands of Goairilla goals. In fact, we were the original inventors and manufacturers of the Goairilla goal! (Pretty cool, huh?) What does the "gauge" of steel mean? Gauge refers to the thickness of steel. The lower the gauge number correlates to thicker steel. Example: 7 gauge is thicker than 11 gauge. What is the regulation height of a basketball goal rim? For high school, college, and professional basketball, the regulation height is 10 feet to the top side of the basketball rim. O W N E R ' S M A N U A L 1. Read this manual carefully before starting assembly. Read each step completely before beginning each step. 2. Some smaller parts may be shipped inside larger parts. Check inside all parts and cartons before assembling or ordering parts. 3. Take assembly of your basketball system easier, use the Hardware Identifier on page 3 and 4 to identify and sort all fasteners. Check all cartons for kits. All hardware is not located in one kit. 4. Do not tighten hardware until instructed to do so. If hardware is tightened too soon, mounting holes may not align and parts may not easily fit together. Leave locknuts slightly loose until you are instructed to tighten them. 5. An electric screwdriver is helpful in assembly. However, please set at low torque and use caution because you could overtighten the hardware and strip the screws. 6. Save these instructions and your proof of purchase (receipt) in the event that the manufacturer has to be contacted for replacement parts. Please Do Not Return This Product To The Store! Contact Escalade Sports customer service department at: Phone: 1-888-USA-GOAL Fax: 1-866-873-3536 E-mail: basketball@escaladesports.com Mailing Address: Escalade Sports PO Box 889 Evansville, IN 47706 Please visit our World Wide Web site at: ON-LINE TROUBLE SHOOTING ON-LINE PARTS REQUESTS ADDITIONAL ESCALADE® SPORTS PRODUCT INFORMATION Escalade® Sports products may be manufactured under licensed patents. The following patents, 6,199,996, 6,179,733, 5,915,102, 6,721,120, 4,798,881, 4,429,648, D,362,128, 8,398,909 Additional patents may be pending. One or more of the listed patents and/or pending patents may cover specific patents we have a 30,000 sq. ft. physical showroom located in Noblesville, Indiana. We have accreditations from the Better Business Bureau and we are a proud WBE (Woman's Business Enterprise). We have been in business for over 25 years. Our crews have installed and assembled thousands of Goairilla goals. In fact, we were the original inventors and manufacturers of the Goairilla goal! (Pretty cool, huh?) What does the "gauge" of steel mean? Gauge refers to the thickness of steel. The lower the gauge number correlates to thicker steel. Example: 7 gauge is thicker than 11 gauge. What is the regulation height of a basketball goal rim? For high school, college, and professional basketball, the regulation height is 10 feet to the top side of the basketball rim. O W N E R ' S M A N U A L 1. Read this manual carefully before starting assembly. Read each step completely before beginning each step. 2. Some smaller parts may be shipped inside larger parts. Check inside all parts and cartons before assembling or ordering parts. 3. Take assembly of your basketball system easier, use the Hardware Identifier on page 3 and 4 to identify and sort all fasteners. Check all cartons for kits. All hardware is not located in one kit. 4. Do not tighten hardware until instructed to do so. If hardware is tightened too soon, mounting holes may not align and parts may not easily fit together. Leave locknuts slightly loose until you are instructed to tighten them. 5. An electric screwdriver is helpful in assembly. However, please set at low torque and use caution because you could overtighten the hardware and strip the screws. 6. Save these instructions and your proof of purchase (receipt) in the event that the manufacturer has to be contacted for replacement parts. Please Do Not Return This Product To The Store! Contact Escalade Sports customer service department at: Phone: 1-888-USA-GOAL Fax: 1-866-873-3536 E-mail: basketball@escaladesports.com Mailing Address: Escalade Sports PO Box 889 Evansville, IN 47706 Please visit our World Wide Web site at: ON-LINE TROUBLE SHOOTING ON-LINE PARTS REQUESTS ADDITIONAL ESCALADE® SPORTS PRODUCT INFORMATION Escalade® Sports products may be manufactured under licensed patents. The following patents, 6,199,996, 6,179,733, 5,915,102, 6,721,120, 4,798,881, 4,429,648, D,362,128, 8,398,909 Additional patents may be pending. One or more of the listed patents and/or pending patents may cover specific patents we have a 30,000 sq. ft. physical showroom located in Noblesville, Indiana. We have accreditations from the Better Business Bureau and we are a proud WBE (Woman's Business Enterprise). We have been in business for over 25 years. Our crews have installed and assembled thousands of Goairilla goals. In fact, we were the original inventors and manufacturers of the Goairilla goal! (Pretty cool, huh?) What does the "gauge" of steel mean? Gauge refers to the thickness of steel. The lower the gauge number correlates to thicker steel. Example: 7 gauge is thicker than 11 gauge. What is the regulation height of a basketball goal rim? For high school, college, and professional basketball, the regulation height is 10 feet to the top side of the basketball rim. O W N E R ' S M A N U A L 1. Read this manual carefully before starting assembly. Read each step completely before beginning each step. 2. Some smaller parts may be shipped inside larger parts. Check inside all parts and cartons before assembling or ordering parts. 3. Take assembly of your basketball system easier, use the Hardware Identifier on page 3 and 4 to identify and sort all fasteners. Check all cartons for kits. All hardware is not located in one kit. 4. Do not tighten hardware until instructed to do so. If hardware is tightened too soon, mounting holes may not align and parts may not easily fit together. Leave locknuts slightly loose until you are instructed to tighten them. 5. An electric screwdriver is helpful in assembly. However, please set at low torque and use caution because you could overtighten the hardware and strip the screws. 6. Save these instructions and your proof of purchase (receipt) in the event that the manufacturer has to be contacted for replacement parts. Please Do Not Return This Product To The Store! Contact Escalade Sports customer service department at: Phone: 1-888-USA-GOAL Fax: 1-866-873-3536 E-mail: basketball@escaladesports.com Mailing Address: Escalade Sports PO Box 889 Evansville, IN 47706 Please visit our World Wide Web site at: ON-LINE TROUBLE SHOOTING ON-LINE PARTS REQUESTS ADDITIONAL ESCALADE® SPORTS PRODUCT INFORMATION Escalade® Sports products may be manufactured under licensed patents. The following patents, 6,199,996, 6,179,733, 5,915,102, 6,721,120, 4,798,881, 4,429,648, D,362,128, 8,398,909 Additional patents may be pending. One or more of the listed patents and/or pending patents may cover specific patents we have a 30,000 sq. ft. physical showroom located in Noblesville, Indiana. We have accreditations from the Better Business Bureau and we are a proud WBE (Woman's Business Enterprise). We have been in business for over 25 years. Our crews have installed and assembled thousands of Goairilla goals. In fact, we were the original inventors and manufacturers of the Goairilla goal! (Pretty cool, huh?) What does the "gauge" of steel mean? Gauge refers to the thickness of steel. The lower the gauge number correlates to thicker steel. Example: 7 gauge is thicker than 11 gauge. What is the regulation height of a basketball goal rim? For high school, college, and professional basketball, the regulation height is 10 feet to the top side of the basketball rim. O W N E R ' S M A N U A L 1. Read this manual carefully before starting assembly. Read each step completely before beginning each step. 2. Some smaller parts may be shipped inside larger parts. Check inside all parts and cartons before assembling or ordering parts. 3. Take assembly of your basketball system easier, use the Hardware Identifier on page 3 and 4 to identify and sort all fasteners. Check all cartons for kits. All hardware is not located in one kit. 4. Do not tighten hardware until instructed to do so. If hardware is tightened too soon, mounting holes may not align and parts may not easily fit together. Leave locknuts slightly loose until you are instructed to tighten them. 5. An electric screwdriver is helpful in assembly. However, please set at low torque and use caution because you could overtighten the hardware and strip the screws. 6. Save these instructions and your proof of purchase (receipt) in the event that the manufacturer has to be contacted for replacement parts. Please Do Not Return This Product To The Store! Contact Escalade Sports customer service department at: Phone: 1-888-USA-GOAL Fax: 1-866-873-3536 E-mail: basketball@escaladesports.com Mailing Address: Escalade Sports PO Box 889 Evansville, IN 47706 Please visit our World Wide Web site at: ON-LINE TROUBLE SHOOTING ON-LINE PARTS REQUESTS ADDITIONAL ESCALADE® SPORTS PRODUCT INFORMATION Escalade® Sports products may be manufactured under licensed patents. The following patents, 6,199,996, 6,179,733, 5,915,102, 6,721,120, 4,798,881, 4,429,648, D,362,128, 8,398,909 Additional patents may be pending. One or more of the listed patents and/or pending patents may cover specific patents we have a 30,000 sq. ft. physical showroom located in Noblesville, Indiana. We have accreditations from the Better Business Bureau and we are a proud WBE (Woman's Business Enterprise). We have been in business for over 25 years. Our crews have installed and assembled thousands of Goairilla goals. In fact, we were the original inventors and manufacturers of the Goairilla goal! (Pretty cool, huh?) What does the "gauge" of steel mean? Gauge refers to the thickness of steel. The lower the gauge number correlates to thicker steel. Example: 7 gauge is thicker than 11 gauge. What is the regulation height of a basketball goal rim? For high school, college, and professional basketball, the regulation height is 10 feet to the top side of the basketball rim. O W N E R ' S M A N U A L 1. Read this manual carefully before starting assembly. Read each step completely before beginning each step. 2. Some smaller parts may be shipped inside larger parts. Check inside all parts and cartons before assembling or ordering parts. 3. Take assembly of your basketball system easier, use the Hardware Identifier on page 3 and 4 to identify and sort all fasteners. Check all cartons for kits. All hardware is not located in one kit. 4. Do not tighten hardware until instructed to do so. If hardware is tightened too soon, mounting holes may not align and parts may not easily fit together. Leave locknuts slightly loose until you are instructed to tighten them. 5. An electric screwdriver is helpful in assembly. However, please set at low torque and use caution because you could overtighten the hardware and strip the screws. 6. Save these instructions and your proof of purchase (receipt) in the event that the manufacturer has to be contacted for replacement parts. Please Do Not Return This Product To The Store! Contact Escalade Sports customer service department at: Phone: 1-888-USA-GOAL Fax: 1-866-873-3536 E-mail: basketball@escaladesports.com Mailing Address: Escalade Sports PO Box 889 Evansville, IN 47706 Please visit our World Wide Web site at: ON-LINE TROUBLE SHOOTING ON-LINE PARTS REQUESTS ADDITIONAL ESCALADE® SPORTS PRODUCT INFORMATION Escalade® Sports products may be manufactured under licensed patents. The following patents, 6,199,996, 6,179,733, 5,915,102, 6,721,120, 4,798,881, 4,429,648, D,362,128, 8,398,909 Additional patents may be pending. One or more of the listed patents and/or pending patents may cover specific patents we have a 30,000 sq. ft. physical showroom located in Noblesville, Indiana. We have accreditations from the Better Business Bureau and we are a proud WBE (Woman's Business Enterprise). We have been in business for over 25 years. Our crews have installed and assembled thousands of Goairilla goals. In fact, we were the original inventors and manufacturers of the Goairilla goal! (Pretty cool, huh?) What does the "gauge" of steel mean? Gauge refers to the thickness of steel. The lower the gauge number correlates to thicker steel. Example: 7 gauge is thicker than 11 gauge. What is the regulation height of a basketball goal rim? For high school, college, and professional basketball, the regulation height is 10 feet to the top side of the basketball rim. O W N E R ' S M A N U A L 1. Read this manual carefully before starting assembly. Read each step completely before beginning each step. 2. Some smaller parts may be shipped inside larger parts. Check inside all parts and cartons before assembling or ordering parts. 3. Take assembly of your basketball system easier, use the Hardware Identifier on page 3 and 4 to identify and sort all fasteners. Check all cartons for kits. All hardware is not located in one kit. 4. Do not tighten hardware until instructed to do so. If hardware is tightened too soon, mounting holes may not align and parts may not easily fit together. Leave locknuts slightly loose until you are instructed to tighten them. 5. An electric screwdriver is helpful in assembly. However, please set at low torque and use caution because you could overtighten the hardware and strip the screws. 6. Save these instructions and your proof of purchase (receipt) in the event that the manufacturer has to be contacted for replacement parts. Please Do Not Return This Product To The Store! Contact Escalade Sports customer service department at: Phone: 1-888-USA-GOAL Fax: 1-866-873-3536 E-mail: basketball@escaladesports.com Mailing Address: Escalade Sports PO Box 889 Evansville, IN 47706 Please visit our World Wide Web site at: ON-LINE TROUBLE SHOOTING ON-LINE PARTS REQUESTS ADDITIONAL ESCALADE® SPORTS PRODUCT INFORMATION Escalade® Sports products may be manufactured under licensed patents. The following patents, 6,199,996, 6,179,733, 5,915,102, 6,721,120, 4,798,881, 4,429,648, D,362,128, 8,398,909 Additional patents may be pending. One or more of the listed patents and/or pending patents may cover specific patents we have a 30,000 sq. ft. physical showroom located in Noblesville, Indiana. We have accreditations from the Better Business Bureau and we are a proud WBE (Woman's Business Enterprise). We have been in business for over 25 years. Our crews have installed and assembled thousands of Goairilla goals. In fact, we were the original inventors and manufacturers of the Goairilla goal! (Pretty cool, huh?) What does the "gauge" of steel mean? Gauge refers to the thickness of steel. The lower the gauge number correlates to thicker steel. Example: 7 gauge is thicker than 11 gauge. What is the regulation height of a basketball goal rim? For high school, college, and professional basketball, the regulation height is 10 feet to the top side of the basketball rim. O W N E R ' S M A N U A L 1. Read this manual carefully before starting assembly. Read each step completely before beginning each step. 2. Some smaller parts may be shipped inside larger parts. Check inside all parts and cartons before assembling or ordering parts. 3. Take assembly of your basketball system easier, use the Hardware Identifier on page 3 and 4 to identify and sort all fasteners. Check all cartons for kits. All hardware is not located in one kit. 4. Do not tighten hardware until instructed to do so. If hardware is tightened too soon, mounting holes may not align and parts may not easily fit together. Leave locknuts slightly loose until you are instructed to tighten them. 5. An electric screwdriver is helpful in assembly. However, please set at low torque and use caution because you could overtighten the hardware and strip the screws. 6. Save these instructions and your proof of purchase (receipt) in the event that the manufacturer has to be contacted for replacement parts. Please Do Not Return This Product To The Store! Contact Escalade Sports customer service department at: Phone: 1-888-USA-GOAL Fax: 1-866-873-3536 E-mail: basketball@escaladesports.com Mailing Address: Escalade Sports PO Box 889 Evansville, IN 47706 Please visit our World Wide Web site at: ON-LINE TROUBLE SHOOTING ON-LINE PARTS REQUESTS ADDITIONAL ESCALADE® SPORTS PRODUCT INFORMATION Escalade® Sports products may be manufactured under licensed patents. The following patents, 6,199,996, 6,179,733, 5,915,102, 6,721,120, 4,798,881, 4,429,648, D,362,128, 8,398,909 Additional patents may be pending. One or more of the listed patents and/or pending patents may cover specific patents we have a 30,000 sq. ft. physical showroom located in Noblesville, Indiana. We have accreditations from the Better Business Bureau and we are a proud WBE (Woman's Business Enterprise). We have been in business for over 25 years. Our crews have installed and assembled thousands of Goairilla goals. In fact, we were the original inventors and manufacturers of the Goairilla goal! (Pretty cool, huh?) What does the "gauge" of steel mean? Gauge refers to the thickness of steel. The lower the gauge number correlates to thicker steel. Example: 7 gauge is thicker than 11 gauge. What is the regulation height of a basketball goal rim? For high school, college, and professional basketball, the regulation height is 10 feet to the top side of the basketball rim. O W N E R ' S M A N U A L 1. Read this manual carefully before starting assembly. Read each step completely before beginning each step. 2. Some smaller parts may be shipped inside larger parts. Check inside all parts and cartons before assembling or ordering parts. 3. Take assembly of your basketball system easier, use the Hardware Identifier on page 3 and 4 to identify and sort all fasteners. Check all cartons for kits. All hardware is not located in one kit. 4. Do not tighten hardware until instructed to do so. If hardware is tightened too soon, mounting holes may not align and parts may not easily fit together. Leave locknuts slightly loose until you are instructed to tighten them. 5. An electric screwdriver is helpful in assembly. However, please set at low torque and use caution because you could overtighten the hardware and strip the screws. 6. Save these instructions and your proof of purchase (receipt) in the event that the manufacturer has to be contacted for replacement parts. Please Do Not Return This Product To The Store! Contact Escalade Sports customer service department at: Phone: 1-888-USA-GOAL Fax: 1-866-873-3536 E-mail: basketball@escaladesports.com Mailing Address: Escalade Sports PO Box 889 Evansville, IN 47706 Please visit our World Wide Web site at: ON-LINE TROUBLE SHOOTING ON-LINE PARTS REQUESTS ADDITIONAL ESCALADE® SPORTS PRODUCT INFORMATION Escalade® Sports products may be manufactured under licensed patents. The following patents, 6,199,996, 6,179,733, 5,915,102, 6,721,120, 4,798,881, 4,429,648, D,362,128, 8,398,909 Additional patents may be pending. One or more of the listed patents and/or pending patents may cover specific patents we have a 30,000 sq. ft. physical showroom located in Noblesville, Indiana. We have accreditations from the Better Business Bureau and we are a proud WBE (Woman's Business Enterprise). We have been in business for over 25 years. Our crews have installed and assembled thousands of Goairilla goals. In fact, we were the original inventors and manufacturers of the Goairilla goal! (Pretty cool, huh?) What does the "gauge" of steel mean? Gauge refers to the thickness of steel. The lower the gauge number correlates to thicker steel. Example: 7 gauge is thicker than 11 gauge. What is the regulation height of a basketball goal rim? For high school, college, and professional basketball, the regulation height is 10 feet to the top side of the basketball rim. O W N E R ' S M A N U A L 1. Read this manual carefully before starting assembly. Read each step completely before beginning each step. 2. Some smaller parts may be shipped inside larger parts. Check inside all parts and cartons before assembling or ordering parts. 3. Take assembly of your basketball system easier, use the Hardware Identifier on page 3 and 4 to identify and sort all fasteners. Check all cartons for kits. All hardware is not located in one kit. 4. Do not tighten hardware until instructed to do so. If hardware is tightened too soon, mounting holes may not align and parts may not easily fit together. Leave locknuts slightly loose until you are instructed to tighten them. 5. An electric screwdriver is helpful in assembly. However, please set at low torque and use caution because you could overtighten the hardware and strip the screws. 6. Save these instructions and your proof of purchase (receipt) in the event that the manufacturer has to be contacted for replacement parts. Please Do Not Return This Product To The Store! Contact Escalade Sports customer service department at: Phone: 1-888-USA-GOAL Fax: 1-866-873-3536 E-mail: basketball@escaladesports.com Mailing Address: Escalade Sports PO Box 889 Evansville, IN 47706 Please visit our World Wide Web site at: ON-LINE TROUBLE SHOOTING ON-LINE PARTS REQUESTS ADDITIONAL ESCALADE® SPORTS PRODUCT INFORMATION Escalade® Sports products may be manufactured under licensed patents. The following patents, 6,199,996, 6,179,733, 5,915,102, 6,721,120, 4,798,881, 4,429,648, D,362,128, 8,398,909 Additional patents may be pending. One or more of the listed patents and/or pending patents may cover specific patents we have a 30,000 sq. ft. physical showroom located in Noblesville, Indiana. We have accreditations from the Better Business Bureau and we are a proud WBE (Woman's Business Enterprise). We have been in business for over 25 years. Our crews have installed and assembled thousands of Goairilla goals. In fact, we were the original inventors and manufacturers of the Goairilla goal! (Pretty cool, huh?) What does the "gauge" of steel mean? Gauge refers to the thickness of steel. The lower the gauge number correlates to thicker steel. Example: 7 gauge is thicker than 11 gauge. What is the regulation height of a basketball goal rim? For high school, college, and professional basketball, the regulation height is 10 feet to the top side of the basketball rim. O W N E R ' S M A N U A L 1. Read this manual carefully before starting assembly. Read each step completely before beginning each step. 2. Some smaller parts may be shipped inside larger parts. Check inside all parts and cartons before assembling or ordering parts. 3. Take assembly of your basketball system easier, use the Hardware Identifier on page 3 and 4 to identify and sort all fasteners. Check all cartons for kits. All hardware is not located in one kit. 4. Do not tighten hardware until instructed to do so. If hardware is tightened too soon, mounting holes may not align and parts may not easily fit together. Leave locknuts slightly loose until you are instructed to tighten them. 5. An electric screwdriver is helpful in assembly. However, please set at low torque and use caution because you could overtighten the hardware and strip the screws. 6. Save these instructions and your proof of purchase (receipt) in the event that the manufacturer has to be contacted for replacement parts. Please Do Not Return This Product To The Store! Contact Escalade Sports customer service department at: Phone: 1-888-USA-GOAL Fax: 1-866-873-3536 E-mail: basketball@escaladesports.com Mailing Address: Escalade Sports PO Box 889 Evansville, IN 47706 Please visit our World Wide Web site at: ON-LINE TROUBLE SHOOTING ON-LINE PARTS REQUESTS ADDITIONAL ESCALADE® SPORTS PRODUCT INFORMATION Escalade® Sports products may be manufactured under licensed patents. The following patents, 6,199,996, 6,179,733, 5,915,102, 6,721,120, 4,798,881, 4,429,648, D,362,128, 8,398,909 Additional patents may be pending. One or more of the listed patents and/or pending patents may cover specific patents we have a 30,000 sq. ft. physical showroom located in Noblesville, Indiana. We have accreditations from the Better Business Bureau and we are a proud WBE (Woman's Business Enterprise). We have been in business for over 25 years. Our crews have installed and assembled thousands of Goairilla goals. In fact, we were the original inventors and manufacturers of the Goairilla goal! (Pretty cool, huh?) What does the "gauge" of steel mean? Gauge refers to the thickness of steel. The lower the gauge number correlates to thicker steel. Example: 7 gauge is thicker than 11 gauge. What is the regulation height of a basketball goal rim? For high school, college, and professional basketball, the regulation height is 10 feet to the top side of the basketball rim. O W N E R ' S M A N U A L 1. Read this manual carefully before starting assembly. Read each step completely before beginning each step. 2. Some smaller parts may be shipped inside larger parts. Check inside all parts and cartons before assembling or ordering parts. 3. Take assembly of your basketball system easier, use the Hardware Identifier on page 3 and 4 to identify and sort all fasteners. Check all cartons for kits. All hardware is not located in one kit. 4. Do not tighten hardware until instructed to do so. If hardware is tightened too soon, mounting holes may not align and parts may not easily fit together. Leave locknuts slightly loose until you are instructed to tighten them. 5. An electric screwdriver is helpful in assembly. However, please set at low torque and use caution because you could overtighten the hardware and strip the screws. 6. Save these instructions and your proof of purchase (receipt) in the event that the manufacturer has to be contacted for replacement parts. Please Do Not Return This Product To The Store! Contact Escalade Sports customer service department at: Phone: 1-888-USA-GOAL Fax: 1-866-873-3536 E-mail: basketball@escaladesports.com Mailing Address: Escalade Sports PO Box 889 Evansville, IN 47706 Please visit our World Wide Web site at: ON-LINE TROUBLE SHOOTING ON-LINE PARTS REQUESTS ADDITIONAL ESCALADE® SPORTS PRODUCT INFORMATION Escalade® Sports