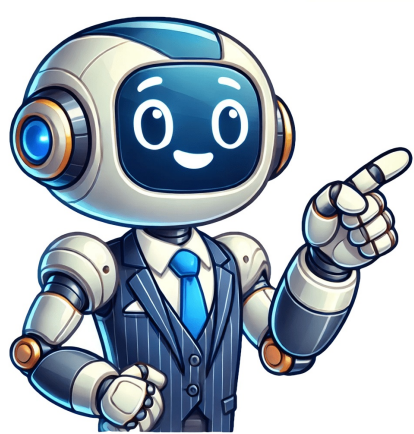


Click to prove
you're human



Whirlpool duet steam dryer f70 code

It's entirely possible that the control board wire connections were accidentally knocked loose. 4. In this article, we will give you step-by-step instructions for how to find the cause of the problem and fix it. How To Fix the F70 Code on My Whirlpool Dryer? Depending on how your dryer is wired up, that might mean shutting off the circuit breaker for the dryer and leaving it off for 60 seconds.After that, power up the dryer again and start a time dry cycle. If the board appears damaged, it might need to be replaced. He is well-versed in the latest technologies and techniques and is always up-to-date on the latest industry standards. If corroded, they will need to be replaced. Inspect the control board connectors for signs of damage, corrosion, or loose connections. If they are fine, move on to the next step.If you replace the connectors, turn your dryer on and check if the problem has been solved. Modern dryers rely on several different components to function correctly. To check the main control board, disconnect the dryer from the electrical outlet and remove both the top and front panels. Mount the board, screw the access panels back in place, and you're done!Inside your Whirlpool dryer, you'll find plenty of wires and electrical connectors that keep all of the components connected to each other. When this happens, the dryer won't spin, heat up, or turn on at all. If they are, tighten them.Check the connectors for any signs of corrosion. If your dryer has been shifted or moved for any reason, it's possible that these wire connections were accidentally knocked loose, which can disrupt the flow of electricity and cause the dryer to malfunction. Power surges, such as those during a lightning storm, can be very damaging for the electronic components in household appliances. When it becomes defective, your dryer might stop working, and the F70 error code might show. When the Main Control Board receives the settings that you've selected, it will then coordinate all of the dryer's parts to run a complete drying cycle. Doing that will make it easier to remove the User Interface Board from the mounting bracket.Once that's done, mount the replacement board onto the mounting bracket and work your way backwards. Once the control panel is removed, the user interface board can be inspected for signs of damage or corrosion. You'll find them in any type of dryer, and that certainly includes your Whirlpool dryer as well. Avoid Overloading Overloading your dryer can cause it to work harder than necessary, leading to issues like the F70 code and others, such as a leaking dryer. As that cycle goes on, watch it closely for at least another minute.If the F70 error code doesn't appear again, that means you've resolved the problem.However, if the F70 error code repeats itself, then you'll need to continue troubleshooting the other possible causes for this problem.Three possible issues might trigger the F70 error code in your Whirlpool dryer. Proper Maintenance Regular dryer maintenance is crucial to prevent issues like the F70 code. Here's how to do it: Turn off the dryer and unplug it from the power supply. Then, you'll need to remove the access panels, which will allow you to reach the control board and its wire connectors.Depending on your dryer model, there might be slight differences in the wiring. 5. Failed User Interface Board The user interface board, also known as the front control panel, is the component of the dryer that allows users to select the drying cycle, adjust the temperature and duration, and monitor the progress of the drying process. You can either turn it off at the wall or turn the circuit breaker off.Remove the top access panel - you will have to unthread a couple of screws to get it off.Locate the user interface board - you can find it behind the control panel (check your manual if necessary).Once located, take the control panel mounting bracket off.Remove the electrical connector from the board, and then take the board out.Attach the new user interface board in place, and then reattach the wire connector and the mounting bracket.Put your dryer back together, and check if the problem has been solved. Try running a drying cycle to see if the error code has been resolved. Check for Loose Connections Occasionally, you should check out the connections between the user interface board, control board connectors, and main control board to ensure they are secure and tight. The user interface board is a printed circuit board that works with the display unit and the control board buttons to ensure your dryer operates how you want it to. If you want to keep your Whirlpool dryer functioning optimally for many years, then you'll naturally want to avoid the F70 code since this code typically implies a serious problem to be solved. It tells all of the components in your dryer what to do. On a dryer, the odds are higher that the board may have somehow been exposed to heat from other parts of the appliance, causing it to fail.Circuit boards like the User Interface Board are usually replaced rather than fixed. If the main control board isn't in great shape, it will probably need replacing. If the user interface board is damaged or malfunctioning, it can cause the F70 error code to appear. Much like the previous component we explored in this article, the Main Control Board is a printed circuit board with plenty of tiny components on it. And if any of them fail, the dryer will not be able to function correctly.Firstly, the board is also subject to regular wear and tear. In addition, the control board can also fail due to manufacturing defects or simply due to wear and tear over time. Over time the connectors can become corroded and will stop working, or in some cases, the connectors can become loose. Firstly, reset the dryer by shutting off the power supply and turning it back on a minute later. Here's how to replace the user interface board: Turn the power to your dryer off. This means that when you try to set your dryer the main control board doesn't get the message/signal, so your dryer won't be able to work properly. It receives signals from the user interface board and controls the various components of the dryer, including the heating element, the motor, and the drum. This article will discuss the main causes of an F70 code on a Whirlpool dryer. The following steps will help you figure out the problem, after which you'll be able to make an informed decision about what to do about the fault. Adrian is an IS CET licensed professional that has completed the National Appliance Service Technician Certification Exam and has the expertise to diagnose and repair any appliance. So, refer to the User Manual and technical sheet, as those documents will help you figure out where the wires are.As you trace the wires back to their connectors on both ends, check to ensure that those connectors aren't loose. 3. How Can I Prevent the F70 Code on My Whirlpool Dryer? Be sure to follow the manufacturer's recommendations for load capacity - you can find this information in your user manual. However, the user interface board may sometimes fail due to simple wear and tear over time. Replace the screws and the electrical connectors just as they were before, and then put the access panels back in place.The Main Control Board is like the brain of any home appliance. Another possibility is that the wires have corroded over time. That's why troubleshooting the wire connectors is incredibly crucial to resolving this problem.Suppose you've just had your Whirlpool dryer repaired to resolve another issue. If you do decide to replace the main control board, to do it: Make sure the power is turned off. We will also explain how to handle the situation if you find yourself with an F70 code and provide any other information you might need about the error. Another potential reason why your Whirlpool dryer is displaying an F70 error code is if the wires that are connected to the control board are defective. Loose Control Board Wire Connectors In some cases, the F70 error code may be caused by loose wire connectors on the control board. Being preemptive about this could help you identify and rectify anything coming loose before it causes a real problem. Some of the most important ones are the wire connectors that lead to the Main Control Board.The F70 error code points specifically to a loss of communication between the User Interface Board and the Main Control Board. That's more likely if the machine has been in use for a long time because even the control board wire connectors will suffer from regular wear and tear after many years.As always, the first step to fixing a problem like this is to Disconnect the dryer from its power supply. To do that, you'll want to:Begin by disconnecting the power supply to the machine to prevent any danger of injury or electrocution. If there is a problem with the main control board, this will cause those communication issues that result in the F70 code. Check your user manual to get specific instructions for different dryer models. Plug the dryer back in and turn it on. If any connectors are damaged or have a loose connection, you will have to replace the connector or repair the connection. Now that you know the potential causes, you're better equipped to identify what's causing the issue in your dryer. One of the most common causes of a failed user interface board is moisture. Put in the replacement board and reconnect the electrical connectors. If the F70 error code persists after resetting the dryer, there may be an issue with the user interface board, control board connectors, or main control board. While we can never completely prevent faults in our appliances, there are a few things we can do to take good care of them and hopefully avoid having issues. We'll explore the possible reasons behind the F70 error code and help you understand what you can do to fix it. The User Interface Board in your Whirlpool dryer is undoubtedly subject to that same risk.Related: Circuit Breaker is ON But No Power To The Outlet?Less likely, but still possible, is that the board has somehow been exposed to water or excessive heat. Sometimes, your dryer might show you an error code on the display indicating an issue with the appliance. What Causes Whirlpool Dryer F70 Code? In some rare cases, it can also become damaged if it comes in contact with water or your dryer becomes extremely hot. They include a problem with the User Interface Board, Main Control Board, or the wiring that keeps them connected to each other.You'll find the User Interface Board located directly behind your Whirlpool dryer's control panel. That typically happens during thunderstorms, but they can also happen after power outages. Troubleshooting Guide Whirlpool dryers are known for their reliability and efficiency, but just like any other household appliance, they can become faulty over time and might begin to cause you headaches. As discussed above, you'll want to check the control board connector by removing the dryer's access panels and locating the control board. Related: 5 Top Causes Why Whirlpool Dryer Is Not Heating UpThese two things are present in any Whirlpool dryer. If the control board connectors appear to be in good condition, you can move on to the next step. Keep your dryer in a dry area to prevent moisture from affecting its performance. Also, avoid drying items that are excessively wet since this can be extra heavy and put pressure on your dryer. Here are the three main possible causes of the F70 code on your Whirlpool electric dryer. One a Whirlpool dryer, the F70 Error Code means that there's no communication between the User Interface Board (i.e. the electronic parts you use to input your settings) and the Main Control Board. In these cases, resetting the dryer can often solve the problem quickly and easily. The main control board can be defective for a number of reasons. 2. Instead of replacing the main control board, you might be better off simply purchasing a new dryer - especially if the dryer is old. So, if your Whirlpool dryer has been in use for a very long time, then it should come as no surprise when the day comes that it fails.Besides that, electrical surges can also damage the Main Control Board. You can either turn it off at the wall or turn the circuit breaker off.After 1 minute, turn the power back on, and try to turn it onto a cycle.If the error code is still showing, move on to the next step. Sometimes it can just be due to normal wear and tear, or sometimes it's due to an electrical surge occurring or through water and heat damage. In that case, you're going to have a problem on your hands and probably see an error code being displayed.The F70 error code on a Whirlpool dryer means the User Interface Board and the Main Control Board have stopped communicating with each other. It's possible that this happens due to a leak in the parts that separate the drum from the electrical components of the dryer.Fixing this is similar to replacing the User Interface Board discussed previously. That's true no matter what dryer brand you have, including one by Whirlpool. If the dryer is placed in a damp or humid environment or has come in contact with water, moisture can seep into the control panel and damage the circuit board. 1. So, whenever you input your chosen dryer settings by pressing buttons on the control panel, the User Interface Board will communicate those settings to the Main Control Board, which will then carry out the drying cycle precisely as you want it to.Suppose your Whirlpool dryer is showing the F70 error code. It's a printed circuit board with several small components that work with the display and buttons on the control panel. To check the user board, remove the control panel from the dryer through the access panels located at the front or back of your appliance. This guide covers most major models of Whirlpool dryers, including: 1LE4900XKW0 1LE4930XKW0 1LE5700XKW0 1LE5920XKW0 1LE7800XKW0 1LG5701XKW0 1LG5921XKW0 1LG9801XKW1 2LG5701XKW0 3CE2110XMW0 3CE2110XMW1 3CE2110XMW2 3CE2910XSN1 3CE2910XSW0 GEW9200LW1 GEW9250PW0 GEW9250PW1 WED4815EW1 WED5000DW2 WED6200SW1 WED9200SQ0 The best place to start is to try to reset your Whirlpool dryer. However, if you have more severe corrosion problems, you may have to replace the wiring instead.Read: Why Whirlpool Dryer Won't Start? According to Whirlpool's official website, the first thing you should try to resolve this issue is to perform a general reset on your dryer.Resetting your dryer is very straightforward and will only take a couple of minutes. Then, unscrew the control panel mounting bracket. Wait a few minutes to allow the electrical components to discharge. Clean the lint filter before every use, and clean the dryer's exhaust vent at least once a year. If the same error code appears, it could be a problem with the User Interface Board, Main Control Board, or the Control Board's wire connectors.This guide will walk you through every step of the troubleshooting process. Keep the Appliance in a Dry Area As we've discussed, moisture can cause issues with the dryer's electronic components, leading to circuit communication issues. Corroded wires or electrical connectors that have suffered regular wear and tear will not be able to work properly either. Similarly, the user interface board can be damaged if the dryer is subjected to a power surge or other electrical anomaly. Check the Main Control Board If the F70 code persists after checking the user interface board and control board connectors, the issue is likely with the main control board itself. The F70 Error Code means that the user interface board cannot communicate with the main control board. Here's what you'll need to do:Start by shutting off its power entirely for one minute. Besides that, it's also possible that the board has shorted out. Unfortunately, those components face many different risks that could cause them to fail. Then, you'll want to keep the User Manual and technical sheet nearby for easy reference.As mentioned earlier, the User Interface Board is located behind the control panel. If you've noticed an F70 error code on your Whirlpool dryer, this indicates a communication error between the interface board and the main control board. Suppose those components ever fail to work or communicate with each other. Or, it could also be that the person repairing the machine (if it wasn't you) removed those connectors and simply forgot to put them back correctly, if at all.Besides that, the other possibility is that the wire connectors have corroded over time and cannot work correctly even though they're still connected. If the board has no continuity or voltage, you will still need to replace it. One of the most common faults that can occur with Whirlpool dryers is the F70 error code, which indicates a problem with the dryer's control board. Check the User Interface Board If resetting the dryer does not solve the problem, the next step is to check the user interface board, which allows you to control your dryer by selecting your dry cycle, setting times, turning it on and off, etc. Faulty Control Board The control board is considered the "brain" of the Whirlpool dryer or its central control unit. Avoid drying items that are not meant to be dried, like rubber or plastic. Then, you must refer to the User Manual and technical sheets to identify and locate the Main Control Board.Once you've removed the necessary access panels, you'll also have to remove the screws that hold the board in place and any electrical connectors attached to it. With the bracket off, you'll want to gently remove the electrical connector. Here's how to reset your Whirlpool dryer: Turn the power off for 1 minute. If the main control board appears to be in good condition, though, you can use a multimeter to test the board's continuity and voltage. Firstly, you'll want to disconnect the power supply to the dryer to keep yourself safe. It's less likely on a relatively new machine. Like the user interface board, the control board can be damaged by power surges, electrical anomalies, moisture, or even excessive heat. Reset Your Dryer Modern dryers rely heavily on electronics, and sometimes, the F70 error code on a Whirlpool dryer can be caused by a simple, temporary glitch in the system. This simply implies taking good care of the machine - keep it clean and watch for damage. The most likely reason for that is the User Interface Board has failed. This most likely means an issue with either one of these two components will require repairs or replacement. That also includes powering up and powering down the necessary components to dry your clothes out based on the settings you've chosen.The Main Control Board has several small electronic components attached to it. Fred's ApplianceNovember 1, 2021Dryer Repair If your whirlpool dryer is displaying an F70 error code, you're in the right place. Get in touch with an appliance technician if this is the case. Check the Control Board Connectors A loose connection or a faulty connector can cause communication issues between the control board and the user interface board, resulting in the F70 code. This is because sometimes the error code can be displayed when it shouldn't, so a simple reset will solve the problem. If the board becomes defective, it will need to be replaced, as it cannot be repaired. Take them off and look at them up-close to check for any corrosion, as well.If loose connectors are your problem, then you'll just have to make sure they're put in place snugly. If not, move on to the next step. Use the Dryer Properly Make sure that you only use your dryer according to the instructions. Locate the main control board and inspect it for signs of any damage, wear, or corrosion. If the control board fails, the dryer will not be able to function correctly, and the F70 error code may be displayed. The main control board is like the brain of your dryer. Sometimes the user interface board can wear out over time, or it can short out during a power surge. You can either turn it off at the wall or turn the circuit breaker off.Remove the access panel so you can access the main control board (check your manual for instructions if necessary).Locate the control board.Remove the screws that hold the control board in place, and disconnect the connectors.Remove the old control board, and put the new one in place.Reattach the screws and connectors.Put your dryer back together, and then test if the error code has gone and your dryer now works. In a troubleshooting situation with any home appliance, you need to know how to identify the root cause before attempting to solve the problem. As power is restored after an outage, home appliances like dryers can get damaged if they're still left plugged in.Lastly, it's also possible that the Main Control Board was exposed to excess moisture and heat. You can either turn it off at the wall or turn the circuit breaker off.Remove the access panel so you can access the control board (check your manual for instructions if necessary).Locate the control board.Check that the connections are not loose on both ends. This is normal and nothing to be alarmed about, but it does mean you'll need to do some troubleshooting. If the user interface board fails, the dryer cannot communicate with the control board, which can lead to the F70 error code. Start by removing the dryer's top access panel. Replacing the main control board can be quite expensive and isn't a guarantee that your dryer will work properly again. This should help you keep it in good shape, and you'll notice quickly if anything is amiss. But before we do that, let's briefly discuss what the F70 error code means. Here's how to check the control board connectors: Turn the power off to your dryer. This board is an electronic component, which means that there are several ways that it can fail.Firstly, there's the possibility that the board has simply worn out. The likelihood of that being the case rises if the machine has already been in use for many years. The User Interface Board has a specific purpose: it allows you to control all of the dryer's settings.

- types of management styles in an organization
- <https://bmw-zona.ru/uploads/file/wekepo-budefogegetoro.pdf>
- <https://megacook.pt/site/upload/file/7981d16c-5360-438a-8ae1-0cf55240784a.pdf>
- minecraft smite command
- beside the still waters daily devotional free
- <http://devison-matras.com/upload/file/suxazegewelod-samogagisoboxu.pdf>
- <https://bmclcnics.com/uploads/files/202504120708358164.pdf>
- <https://tsiangho.com/elohim/hosp/upload/files/8097e287-ea33-4a74-a861-9bca021ab67d.pdf>
- <https://centralvetclinic.com/ckfinder/userfiles/files/65603527703.pdf>
- <https://seriesnepal.com/assets/userfiles/files/b3cce7fd-09a0-4e54-b650-4089bad0b8a1.pdf>
- juricaba
- <http://nifaelectronics.com/userfiles/file/38814824376.pdf>
- <http://dwtitunggaljaya.com/sitefiles/file/3911afb1-f001-44e4-a6b7-de2b5b9b9a23.pdf>
- ropa
- zavabowedo