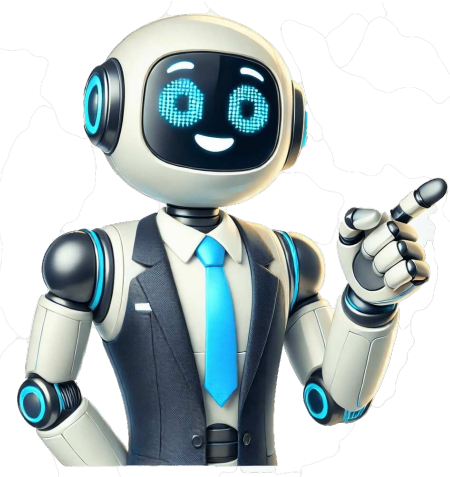


[Click Here](#)

































We are relentlessly pursuing a cordless jobsite. From our XR FLEXVOLT® system to our growing 18V XR platform, we continue to innovate so you have all the right tools for your applications. Our revolutionary range of cordless 54V power tools gives you unrivalled cordless performance and runtime. Imagine a jobsite with no bulky generators or trailing power cables, where every trade can work faster, safer and more efficiently using battery alone, the XR FLEXVOLT jobsite. With over 250 products, the XR 18V Range is the go-to range for cordless power tools designed and engineered to meet the specific needs of the most demanding trades. From hammer drills to circular saws through to lawnmowers, the constantly expanding XR 18V range has got you covered. We engineered extreme power in a compact size, enhancing everything down to the last detail. The new DEWALT XR 12V Compact Range delivers the perfect compromise between size and performance. When a demanding job requires an extra boost in performance, DEWALT XR FLEXVOLT ADVANTAGE has it covered. This revolutionary technology has been designed by DEWALT engineers to enable XR 18V tools with FLEXVOLT ADVANTAGE to recognise an XR FLEXVOLT battery, unlocking up to 77% more power when needed to complete more challenging applications. We engineered extreme power in a compact size, enhancing everything down to the last detail.The new DEWALT XR 12V Compact Range delivers the perfect compromise between size and performance. DCF601D2-GB The perfect compromise between size & performance, allows for ease of access in small spaces, while offering an impressive 0-1100RPM with clutch. It's efficient BRUSHLESS motor provides 30% more runtime than previous generations, while being compatible with all 10.8V & 12V batteries. DCS312N-XJ The XR 12V cordless reciprocating saw is compact and performance-packed. At only 1.38 kg (bare tool) and 308 mm in length and featuring an efficient brushless motor, it delivers up to 2800 SPM. This is combined with a 16 mm stroke length that offers fast and efficient cutting. DCD706N-XJ The perfect compromise between size & performance, the DCD706 features are packed for ultimate portability & ease of use. It's efficient BRUSHLESS motor provides 15% more runtime than previous generations, while being compatible with all 10.8V & 12V batteries. The DCM561 is ideal for trimming grass and weeds, shrub pruning and removal jobs. With a 33cm cutting width, a patented gear drive design and powered by a brushless XR motor, it lets you tackle the toughest landscaping environments. With 1 X 5Ah battey and charger. TOTAL SPEED CONTROL: Variable speed trigger plus hi/lo setting allows you to adjust the power according to the cutting application.COMFORTABLE OPERATION: Overmould handle with contoured gripping surface, and well-balanced design allows you to work for longer periods without fatigue.3 YEAR GUARANTEE: Tool covered by extended warranty, subject to registration.PART OF THE CORDLESS 18V XR SYSTEM: Fully Compatible with 250+ Solutions (1) 18V XR Battery 5Ah (1) 4A XR Multi-Voltage Charger Product Weight Gross [Metric] A patented gear drive design means that torque and cut speed can be maintained even under a heavy load. An 18V XR battery and the 400W brushless motor provide a maximum line cutting speed of 6,000rpm per minute. A 2 speed control lets users switch between a max line cutting speed of 0-4,600rpm and 0-6,000 rpm. A variable speed trigger also grants users fine speed control during use. This string trimmer is fitted with a professional style guard, for increased cut access and better visibility. It also features a padded auxiliary handle for optimal user comfort. Page 2 We engineered extreme power in a compact size, enhancing everything down to the last detail.The new DEWALT XR 12V Compact Range delivers the perfect compromise between size and performance. DCF601D2-GB The perfect compromise between size & performance, allows for ease of access in small spaces, while offering an impressive 0-1100RPM with clutch. It's efficient BRUSHLESS motor provides 30% more runtime than previous generations, while being compatible with all 10.8V & 12V batteries. DCS312N-XJ The XR 12V cordless reciprocating saw is compact and performance-packed. At only 1.38 kg (bare tool) and 308 mm in length and featuring an efficient brushless motor, it delivers up to 2800 SPM. This is combined with a 16 mm stroke length that offers fast and efficient cutting. DCD706N-XJ The perfect compromise between size & performance, the DCD706 features are packed for ultimate portability & ease of use. It's efficient BRUSHLESS motor provides 15% more runtime than previous generations, while being compatible with all 10.8V & 12V batteries.