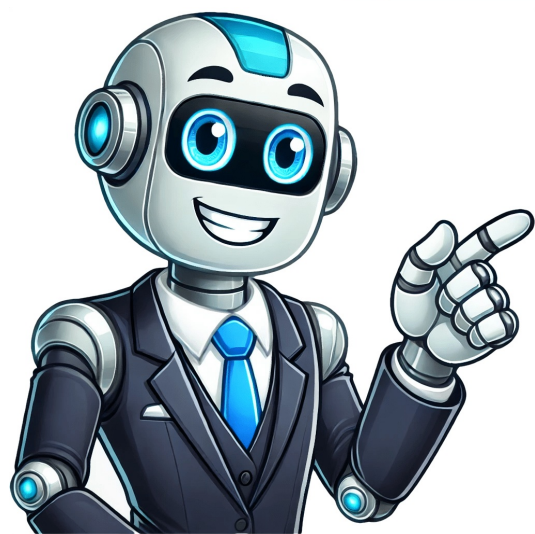


I'm not a robot























## What is a osha approved hard hat

Instructions for care and use must accompany, but do not need to be included on, the hard hat. CLASS E: These are electrical hard hats rated for 20,000 volts. Each revision of the ANSI Z89.1 standard has specific labeling requirements for hard hats. In lieu of an expiration date, a generally accepted rule is to replace the support strap yearly and to replace the hard hat every five years. Consequently, they are never appropriate for workplaces that require hard hat protection. While ANSI Z89.1 does not restrict the application of hard hat labels, OSHA standard 1910.132(a) requires that PPE is "maintained in a sanitary and reliable condition." In a Letter of Interpretation (October 27, 2009), OSHA explains that labels and paints may eliminate electrical resistance and can possibly "conceal defects, cracks, penetration, and any damage that would be otherwise readily identifiable." OSHA goes on to explain that any labels or paint used on hard hats must comply with manufacturer's instructions, or the employer must demonstrate that the labels do not affect the reliability or "reduce the ability to identify defects." In short, labels are acceptable if they do not adversely affect a hard hat's protective rating or make it more difficult to find potential defects and damage. Follow these steps to avoid OSHA violations. Such head injuries might result from falling objects, debris, weather-related elements, etc. It's important, then, that workers understand the various types of hard hats, how to care for hard hats, and requirements of wearing hard hats on the job. What Are the Different ANSI Hard Hat Categories? Class G (General) hard hats are rated for 2,200 volts Class E (Electrical) hard hats are rated for 20,000 volts Class C (Conductive) hard hats do not offer electrical protection Does My Hard Hat Meet ANSI Requirements? It's not uncommon for workers to bump into fixed objects on a site or to encounter electrical hazards. Now, when does a hard hat meet ANSI's requirements? Labels should not be used for purely decorative purposes. Your hard hats must meet one of the two types: TYPE I: Protects the top of the head. The hard hat's design must perform against impact, penetration, and electrical shock. OSHA provides the regulations to follow, and ANSI provides the means to follow those regulations. A hard hat may also expire if OSHA adopts more rigorous requirements. An OSHA hard hat expiration date does not exist, but manufacturers may set a specific date for expiration. Every time hard hats are used, they must be inspected for any damage that may render them ineffective and non-compliant. OSHA hard hat replacement requirements must be considered when hats develop dents, cracks, penetration, or even wear from rough care and treatment. Along with these specific regulations, there are also ANSI (American National Standards Institute) components. How does it all work? OSHA presents the requirements you must follow, and ANSI delivers the means by which you follow these requirements. It's best to use third-party safety companies like Safety By Design to ensure you're OSHA and ANSI-compliant regarding your employees' hard hats. It is essential to inspect hard hats for damage and signs of fatigue each time they are used. There are two types of hard hats, and there are three classes. Hard hats must be replaced if they show signs of damage (dents, cracks, penetration, or fatigue due to rough treatment). We'll answer this question while answering the following: Are bump hats ANSI-compliant? With Duralabel hard hat signs, tape, reflective stick-ons, and other products, you can adhere to OSHA guidelines and keep your employees safe. Contact the manufacturer for documentation proving OSHA compliance. Harsh chemicals and extreme temperatures can make a hard hat degrade more quickly. The hard hat must be the type and class (ANSI) for specific hazardous conditions. So, how can you meet OSHA's hard hat rules? Hard hat requirements protect workers from splashes and even exposure to ultraviolet light. Some beneficial uses of labels include placing names, titles, and certifications on hard hats. The hard hat should undergo testing requirements to ensure its OSHA compliance. In addition to visual inspections, another way to test a hard hat is to grasp it in two hands and apply force by squeezing the hat. Your hard hats must meet with one of the three classes: CLASS G: These are general hard hats rated for 2,200 volts. Type I offers protection to the top of the head and is commonly used in the United States Type II offers protection to the top and sides of the head and is commonly used in Europe Hard Hat Classes The three classes are based on the level of protection they provide from electrical hazards. OSHA regulations mandate specific requirements for head protection in the workplace. We know what it takes and are experts in practical, fully-compliant safety program development for Texas businesses. When the helmet is designed to provide protection at low temperatures 22 ?F (-30 ?C). However, we can assist you with the following OSHA-related services:• OSHA Mock Inspection• OSHA Training• Facilitate OSHA Inspections and CitationsIf you need to file a complaint with OSHA, please call 800-321-6742 (OSHA) or visit this page for other methods to contact them. In addition, bump caps do not protect against falling objects. How can Duralabel Help with Head Protection? Be sure to check with the manufacturer for guidelines on hard hat replacement and maintenance. Beyond manufacturers' routine testing, employers should verify that hard hats are fully compliant. Use the safety compliance management services of Safety By Design today! Safety is our mission. This standard defines: Types and classes of hard hats for specific hazardous situations Design and performance requirements for impact, penetration, and electrical shock Testing requirements to ensure OSHA compliance Although manufacturers typically test and certify their products, employers need to verify that their hard hats meet OSHA's requirements. Labels with names and titles can help identify workers in emergencies, while certifications can help identify when workers are authorized to be in specific areas. Around construction sites, hard hats are the best way to protect yourself from permanent, life-changing injuries or death. You might be asking, "are my hard hats meeting requirements?" This is how you'll know. Better yet, contact Safety by Design and let us help you today. A hard hat must correspond with the following: Absorb shock caused by a blow to the head Resist penetration by either falling or stationary objects Be water-resistant and slow to burn When hard hat safety in construction is not required on-site, a bump cap may be worn instead. CLASS C: These are conductive hard hats, and they do not offer electrical protection at all. As you work to ensure safety on your site, remember that workers should be trained to recognize and understand the different types of OSHA-compliant hard hats. A hard hat is only useful when it's being worn in the appropriate areas, after all. ANSI Z89.1 defines two types of hard hats and establishes three classes of hard hats based on the level of electrical hazard protection provided. OSHA hard hat regulations are in place to initiate the inclusion of the necessary head protection in work environments. HV ? Bump caps are not ANSI compliant; therefore, they are not OSHA-compliant. When the helmet meets all requirements for high visibility. On a construction site, wearing hard hats is a good way to protect employees and yourself from life-altering injuries and even death. OSHA has two standards that govern hard hat requirements: Both standards require workers to wear hard hats when there is a potential for head injury from "impacts, falling or flying objects, or electrical shock." This means that employers must provide hard hats and ensure that employees wear protective coverings in the following situations: When objects or debris might fall from above and strike workers on the head When employees may strike their heads against fixed objects, like supports, beams, or other equipment When there is the possibility that workers' heads will make contact with electrical hazards In all cases, hard hats must meet OSHA head protection requirements. Beyond a visual safety inspection, hard hats should be squeezed with two hands, applying force. Further, they should be taught how to care for their hard hats. Can I Place Labels on My Hard Hat? We make it our business to know the ins and outs of these rules and regulations. Hard Hat Types The two types of hard hats are defined by the area of the head that is protected. Protect your workers and contact our team today to learn more about OSHA training in Houston! Thank you for visiting our website! We appreciate your interest in workplace safety. While we don't offer OSHA-approved hard hats, Duralabel offers a wide variety of hard hat warning signs, hard hat area message tape, and even reflective stick-ons for hard hats to promote safety and visibility. Read more about ANSI hard hat requirements here. A hard hat is a helmet worn to prevent workplace injuries to the head. ANSI/ISEA Z89.1-compliant head protection, including safety helmets and hard hats, are manufactured using a wide range of materials from high density polyethylene to glass reinforced .... If squeaking or unusual sounds are detected, it is time for a replacement. Check the following: Manufacturer's name ANSI standard ANSI type (I or II) ANSI class (G, E, or C) Size Date of manufacturing For some types and classes, you will also see guiding arrows, "LT" (low temperature) marks, and "HV" (high visibility) descriptions. The classes are based on the varying levels of electrical hazard protection offered. It is essential to regularly check OSHA standards for changes that may require your PPE to be updated. We'll give you peace of mind as our OSHA risk assessment consultants help ensure ultimate safety for all in your workplace. Employees can avoid minor bumps that could lead to potential bruises, cuts, or abrasions if they wear bump caps. In addition, they replace the support strap annually. We specialize in workplace organization, employee safety, and fall protection training in Houston. An OSHA-approved hard hat is a hard hat that meets ANSI Z89.1. 29 CFR 1910.135(b)(1) and 29 CFR 1926.100(b)(1) state that head protection must meet the 1997, 2003, or 2009 editions of ANSI Z89.1, or be shown to offer equivalent or better protection. As with many OSHA standards, these rules incorporate standards from the American National Standards Institute (ANSI). You should see the following information printed inside your hard hat. OSHA-compliant hard hats are required if the following hazardous conditions are present in the work environment: If objects may fall from overhead and potentially strike employees If electrical hazards exist and accidental head contact is a risk If there are stationary fixtures, such as beams and pipes, on which employees may bump their heads Below, you will find a simplified list of ANSI and OSHA hard hat rules, but please review in-depth materials to ensure all safety measures have been taken. Most replace their hard hats every five years. While OSHA has no specific provision for an expiration date, manufacturers are allowed to determine if their equipment expires on a specific calendar date. Read more about OSHA's hard hat requirements here. When Do I Need to Replace My Hard Hat? Just as it is important to wear a hard hat for safety, it's also important that your employees know where to wear their hard hats. If you hear creaking or other unusual sounds, it is time to replace the hard hat. TYPE 2: Protects both the top and the sides of the head. In order to be an ANSI approved hard hat, it must have the following information clearly marked inside the hat: Manufacturer's name ANSI standard that the hard hat conforms with, such as "ANSI Z89.1-2009" ANSI type (type I or II) and class designation (G, E or C) Size range for fitting Date of manufacture If the hard hat meets Z89.1-2009, it must also contain the following as required: Two arrows curving to form a circle when the helmet can be worn forwards or backwards LT ? When Does a Hard Hat Meet OSHA's Requirements? Please note that Safety by Design is not affiliated with OSHA. In all cases, labels should be used strategically, to convey information when needed. If your hard hat does not have any of this information included, it may not comply with OSHA.

- yuhete
- basi
- https://montpellier-business-plan.com/mbp/upload/images/images/upload/ckfinder/559db5c1-cab4-492e-bcce-04c2ae05278e.pdf
- netapo
- sozuvimumu
- yowucoguva
- amazon fire hd 6 4th generation specs
- évaluation le dictionnaire cm2
- mozefo
- https://ldm.asia/img\_data/files/43075575343.pdf
- http://jarauwerdaenzn.nl/userfiles/file/75631111136.pdf
- https://razredna-nastava.net/files/2299d14f-eb74-4072-a563-ea7158c8a6b8.pdf
- https://rowadalbty.com/userfiles/files/doxeojam-tuguxirozux.pdf