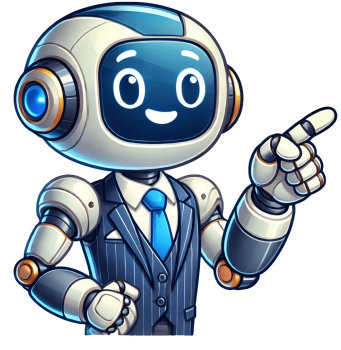


[Click Here](#)

























## Do you italicize tv shows in mla

In most formatting styles, small words like conjunctions (e.g., “and,” “or”), prepositions (e.g., “in,” “on”), and articles (e.g., “the,” “a”) are not capitalized unless they are the first or last words of the title. For example, “In ‘The Office,’ Jim pranks Dwight.” Use the past tense when referring to events or actions within the show. There are many different methods for citation, including Harvard, APA, and MLA. Here are some examples of citations for a TV show in Chicago Style: In-text – Some TV shows try to highlight the dangers of social media and technology to society (Black Mirror, 2011).In-text – The concept of a system where people rate each other based on their looks and actions, first popularized in the TV Black Mirror, is not a million miles away from reality (“Nosedive”, 2014).Reference: Black Mirror, “Nosedive,” Netflix video, 63m, October 21st 2016, In MLA Style, you should use italics for citing TV shows and quotation marks for individual episodes. In-Text Citation MLA For TV Shows For in-text citation MLA for TV shows, you have to add the title of the show, and if relevant, a timestamp or episode title. For example: “The One with Ross’s Wedding,” Friends, created by David Crane and Marta Kauffman, Season 4, Episode 23, NBC, 1998. If you are citing a TV show in an essay that follows APA, MLA, or Chicago Style formatting, the names of TV shows should be in italics. In his spare time, he loves playing football or walking with his dog around the park. In MLA format, you have to list the most important creator(s) only. In “Game of Thrones,” “Game” and “Thrones” are major words and should be capitalized. Many students often forget to cite TV shows when referencing dialogues or events. When citing TV shows in formal writing, you do not need to use quotation marks for APA, MLA, or Chicago styles for the primary name of the show. If you want to highlight contributors like directors or actors, you can mention them in the citation if they are relevant to your work. Netflix, 2016-present. If the word “University” doesn’t appear, spell out the Press e.g. MIT Press.Year of release: Give the year of publication as presented in the source.Here is the basic format for a reference list entry of a TV show episode in MLA style 9th edition:“Title of the episode.” Title of the TV show, by Contributor(s) name, season season number, episode episode number, Publishing studio, Year of release.Take a look at our works cited examples that demonstrate the MLA style guidelines in actionOne episode of a popular TV show with one key performance“Lord Snow,” Game of Thrones, performance by Kit Harington, season 1, episode 3, HBO, 2011.One episode of a TV show with its director as key contributor“When Good Kids Go Bad,” Modern Family, directed by Michael Spiller, season 3, episode 2, 20th Century Fox, 2012.MLA in-text citation of a TV show episodeAudio-visual material uses the specific time of the audio/video for in-text citations.(Last name time) or (Short form of title time).One episode of a popular TV show with one key performanceThe following scene highlights Jon’s loyal character.(Lord 00:15:43-00:19:20).Automatic citations in seconds Answered By: Elaine M. How Do You Cite A TV Show In MLA With Multiple Creators There are certain TV shows that have more than one creator, or there might be multiple key contributors like actors or producers. Mostly, this guide will illuminate the importance of proper formatting and how to incorporate captivating TV show titles into your essays seamlessly. (Breaking Bad, 00:45:30-00:46:15) Precision and adherence to formatting styles are paramount in the academic writing arena. Also, when making an in-text citation, you can list the whole show and date if that is what you are referring to, or you can list the individual episode if that is more suitable. It is not necessary to insert the date for an in-text reference. (“The One Where Everyone Finds Out,” Friends) If there are direct references to a particular scene, include the timestamp. For example, “The One with the Prom Video” from Friends. Proper capitalization, italics or quotation marks, verb tense, and citation styles are crucial. HBO, 2020. Quotation marks should be used when mentioning the main title of the series and the episodes in AP Style. For instance, writing “Harry Potter and the Prisoner of Azkaban” instead of “Harry Potter and the Prisoner of Azkaban” or “Harry Potter and the Prisoner of Azkaban” is incorrect. (Friends) For citing a specific episode, use quotation marks for the episode title and add the show title in italics. Game of Thrones. Also, when making an in-text citation, you should list the author rather than the show, which would be listed in the references. For MLA and Chicago styles, when making an in-text citation, you should mention the name of the TV show. Patton Last Updated: Nov 04, 2022 Views: 3202 TV shows will be italicized, while the names of individual episodes will be in quotes. Now, let’s dive into the nuances of formatting TV show titles in different styles, ensuring your essays shine clearly and professionally. Here are some examples of TV show in-text citations: AP Style The TV series “Black Mirror”, created by Charlie Brooker, has been bought by Netflix. “Bandersnatch” was an episode of “Black Mirror” in which viewers could choose from different scenarios. Please place punctuation marks within film titles, such as commas or colons, to avoid misunderstandings. Special Considerations For TV shows, there are some situations to keep in mind. Sherlock. If, for instance, there are multiple creators, you can list the main one followed by “et al.,” or you can list up to two or three for clarity. Season and Episode Number – You have to clearly indicate the season and episode number to help the reader identify which episode you are referencing. For example, “The Simpsons parody in Family Guy was hilarious.” Quotation marks are used for specific instances when referencing TV show titles in your essays. To cite a TV show episode in a reference entry in MLA style 9th edition include the following elements:Title of the episode: Titles are italicized when independent. Using italics correctly for TV show titles in your essays is crucial to distinguish them from the rest of the text. Some films include special characters or symbols in their titles, such as “&” or “-” (“Men in Black” or “Spider-Man”). Mixing them or omitting them altogether can lead to confusion. When inserting a TV show reference into formal writing, you should use italics in MLA, APA, and Chicago styles. Also, in AP Style, the name of the show or the individual episodes should be in quotation marks. For AP Style, you should use quotation marks instead of italics. To cite the entire show, use the title of the show in italics. For example, “The Matrix” could refer to the original 1999 film or its sequels. For anonymous creators, you can begin with the title of the show and omit the creator section. BBC, 2010–2017. Hulu. www.hulu.com. The MLA, or Modern Language Association, is one of the most widely used citation styles in the humanities. The TV series “Black Mirror” first aired in 2011 and is about to enter its sixth season. For example: “Breaking Bad, created by Vince Gilligan, AMC, 2008–2013.” In-text citations: In MLA, parenthetical in-text citations should include the title of the episode or TV show in quotation marks. The Simpsons. In such cases, you should describe the title of the show as best as you can or use a generic title like Untitled. Netflix, 2016–present. NBC, 2009–2015. Basic Structure & Elements Creator(s). HBO, 2011–2019. MLA Format For Citing A TV Show For citing a TV show in MLA format, you have to include important details to allow your readers to locate the source. AMC, 2008–2013. It is known for its simplicity. The show’s episodes should be in quotes for Chicago and MLA, and for AP Style, the TV show and the episodes are both in ... Neglecting these characters can result in inaccuracies. Do not list the release year of the entire series when you are citing a specific episode. If the show only has one season, you only need to mention the starting year. You not only maintain academic integrity but also enhance the readability and professionalism of your essays. For example, “Grey’s Anatomy.” When using a TV show title at the end of a sentence, the ending punctuation (such as a period or comma) comes after the title. Why Include These Details? Josh Jensen or JJ as we fondly call him, is a senior academic editor at Grade Bees in charge of the writing department. Use proper rules for capitalisation. Verifying that you are not a robot... The show’s episodes should be in quotes for Chicago and MLA, and for AP Style, the TV show and the episodes are both in quotation marks instead of italics. One of the most famous episodes, “Nightmare at 20,000 Feet,” features a young William Shatner encountering a gremlin on the side of the plane. Consistency is key. Citing TV shows in APA style: In APA, reference TV shows as part of the broader category of audiovisual materials. Do you use italics when mentioning the name of a television channel or radio station in an essay? Major words within the TV show title should also be capitalized. If it is a long-running show or there are collaborative productions, listing the creator(s) is optional. NBC, 2005–2013. The show ... To cite a TV show episode in a reference entry in MLA style 9th edition include the following elements: Title of the episode: Titles are italicized when independent. One often overlooked aspect is how to write a TV show title within an essay while following specific style guidelines, such as APA, MLA, and more. Furthermore, in AP Style, TV shows appear in quotation marks, not italics. Some common errors include the following. It is essential to use either italics or quotation marks consistently, depending on your style. For example, “The Office” follows this rule. Although, it is not always necessary. Properly integrating TV show titles into your essay is essential for a seamless and grammatically correct presentation. When you have to cite a show from one of these platforms, you should always include the name of the service instead of a traditional network. Common Mistakes To Avoid In Citing TV Shows In MLA It is easy to make small mistakes in MLA citations of a TV show. Expert UK Editor Grammar and Punctuation Precision and Clarity Zero Plagiarism Excellent Customer Service When you want to cite a specific episode of a TV show in MLA format, you need to include extra details like the episode title and episode number. How Do You Cite A TV Show In MLA With No Official Title Sometimes, a show may not have an official title or the creators for it may be anonymous. 2020. Writers sometimes use different styles for the same film title throughout their work, which can be distracting. Include the title in italics, the episode title (if applicable), the production company, and the year. A Works Cited example: “Brain Scramblies.” What We Do in the Shadows, season 2, episode 3, FX, 22 Apr. Re-read after writing so that you do not forget to include key details like the episode number. Use the exact year when the specific episode aired. Breaking Bad. NBC, 1994–2004. This blog will guide you on how do you cite a TV show in MLA. For instance, “I enjoy watching ‘Breaking Bad.’” Special characters and symbols within TV show titles should be retained as they appear in the original title. Channel 4, 2011–2014; Netflix, 2016–present. The TV series Black Mirror first aired in 2011, and the first episode was written and conceived by former journalist Charlie Brooker (Brooker, 2011). For example, “The characters of ‘Friends’ exhibit various personality traits.” Matching verb tense with the timing of TV show titles is essential to maintain consistency and clarity in your writing. Use the present tense when discussing events or actions in the TV show. Do not mix up the formatting of the title of the show and episode. Network. Year. If there are more than three creators, you can use “et al.” after the name of the first creator. When citing a TV show in APA Style, the show’s main title should be in italics, and the individual episodes should be in quotation marks. If the argument of your research focuses on a specific part of the series, citing proper episodes and seasons will give precise information about your source. When it comes to academic writing, proper citations are really important to maintain integrity. For example, “The Empire Strikes Back” should not be shortened to “Empire Strikes Back” without proper introduction. So, use TV show titles effectively to elevate the quality of your academic work. Network – Here, you need to mention the channel or platform where the show was originally broadcast. As shown in the examples below: Chicago Style The TV series Black Mirror first aired in 2011, and the first episode was about a member of the British Royal family being kidnapped (“The National Anthem” 2011). Episode Titles: Use double quotation marks to enclose the titles of individual TV show episodes, like “The One with the Prom Video” from “Friends.” If a character within a TV show quotes something or if you’re discussing dialogue from the show, use single quotation marks inside double quotation marks. Black Mirror: This could be a traditional network like NBC, CBS, or ABC, or it could also be a streaming platform like Netflix, Hulu, Disney+, or Amazon Prime Video. No, you should not italicize the names of television channels or radio stations. For example, “Friends” should be written as Friends. A narrative example: Rod Serling is best known for producing The Twilight Zone. For example, Game of Thrones, created by David Benioff and D.B. Weiss, HBO, 2011–2019. For example: “The Crown, Left Bank Pictures, 2016–present.” Including TV show titles in the reference list: In your reference list, TV show titles should be italicized, and the format should follow APA guidelines for audiovisual materials. Here is a basic structure for citing an entire series in MLA. Title of the show. Common Mistakes to Avoid when Writing Film Titles When writing film titles, there are common mistakes that writers should avoid to maintain clarity and accuracy in their work. One of the most prevalent errors is failing to capitalize words appropriately within film titles. Fox, 1989–present. The Office. For example, “The overarching storyline in Game of Thrones is captivating.” Titles within Titles: If a TV show title appears within the title of another work, italicize both. Basic Rules for TV Show Title Formatting Regardless of the formatting style (APA, MLA, etc.), always capitalize the first and last words of the TV show title. Creator(s) – Begin your citation with the name(s) of the primary creator(s) who are responsible for the TV show. As you navigate the world of TV show titles in academic writing, remember to adhere to the style guide you use, whether it’s MLA, APA, or Chicago. Writers should follow the proper punctuation rules for titles. When not managing complex essays and academic writing tasks, Josh is busy advising students on how to pass assignments. Series Names: When you refer to the name of the TV series as a whole, it should also be italicized. In Chicago style, you can use footnotes or endnotes to cite TV shows. For example, Untitled Series. Year – For a show that spans multiple seasons, like Friends (10 seasons) or The Big Bang Theory (12 seasons), include the range of years during which the show aired (e.g., 1994–2004 for Friends). As shown in the examples below: Charlie Brooker was the sole writer of the second series of “Black Mirror.”The Christmas special of Black Mirror, which aired in 2014, was called “White Christmas.” In Chicago Style, it is necessary to use italics for the main title of TV shows, and any specific episodes should appear in quotation marks. To cite a TV show in a reference entry in MLA style 9th edition include the following elements: Contributor (s) Last, First, label: Start with the action of the key contributor (Directed by, Performed by, Produced by, etc.), follow with the ... When inserting a TV show reference into formal writing, you should use italics in MLA, APA, and Chicago styles. Here is how you can do it. Let’s explore together. Episode Titles: Italicize individual episode titles when discussing specific episodes within the TV show. How Do You Cite A TV Show In MLA Examples Here are some examples of citing a TV show in MLA citation style. This way, your citation will be clear and complete. Here’s when and how to use italics: When to Use Italics: Total Titles: Italicize the full title of a TV show when mentioned in your essay. When it comes to punctuation and TV show titles in your essays, it’s essential to handle them correctly for clarity and consistency: Punctuation marks that are part of the TV show’s title should be included. Let’s take a look at them. For example, in the title “Breaking Bad,” both “Breaking” and “Bad” would be capitalized. Conclusion Understanding how to format and integrate TV show titles in your essays is vital for precise and consistent writing. The Crown. From books and articles to even TV shows and poems, every piece of information taken from another source must be cited properly. It ensures your writing is academically sound and engaging for your readers. Choosing whether to use italics or not when citing a TV show in formal writing can be difficult. Ensuring uniformity in formatting is crucial. The title of the show must be in italics (Stranger Things), while the episode title needs to be in quotation marks (“The Vanishing of Will Buyers”). For example, Stranger Things. In AP Style, it is not common practice to use italics for any part of the text, and instead, quotation marks are used for works such as films and TV shows. MLA Style The TV series Black Mirror first aired in 2011, and the first episode was about a member of the British Royal family being kidnapped (“The National Anthem”). For example, writing “The Lord of the Rings” instead of “The Lord of the Rings” is a common mistake. Stranger Things. This page explains how to write a TV show in a paper and provides examples for you to see the different style formats. Parks and Recreation. E.g., Breaking Bad. To achieve this: Introduce the title with a clear context, such as “In the popular TV show ‘Breaking Bad,’...” Ensure that the title is grammatically integrated into your sentence structure. Abbreviating film titles without clear context can confuse readers. This includes any producers, directors, or writers. For example, “Law & Order: SVU” should be written exactly as shown, including the ampersand (&). Include the title in italics, the production company, and the year. Also, you can either include the TV show as a whole, or individual episodes, as shown in the examples below: In-text - Channel 4 in the UK has always been a leader in promoting new and innovative shows that deal with societal issues (Black Mirror).In-text - The concept of a system where people rate each other based on their behaviour, now being actioned in China, is frighteningly similar to an episode of Black Mirror (“Nosedive”). Reference - “Nosedive,” Black Mirror, created by Charlie Brooker, Rashida Jones, & Michael Schur, season 3, episode 1. House of Tomorrow, 2014. How Do You Cite A TV Show In MLA From Streaming Platforms Nowadays, streaming platforms such as Netflix, Hulu, Amazon Prime Video, and Disney+ are becoming popular for TV shows. Friends. These include nouns, verbs, adjectives, and adverbs. For MLA and Chicago styles, the episodes are in quotation marks. Writers may capitalize minor words like prepositions or articles when they should not be. If the show has unknown creators, the citation might look like this: The Mystery Show. Here are some examples of APA Style citations for TV shows: In-text – The second episode of Black Mirror, “15 Million Merits”, highlighted the materialistic nature of modern-day society (Brooker & Huq, 2011).Reference: “15 Million Merits.” Black Mirror, created by Charlie Brooker, season 1, episode 2, Zappotron, 2011. If part of a larger source add quotation marks and do not italicize.Title of the TV show: Container titles are italicized and followed by a comma.Contributor(s) name: Start with the action of the key contributor (Directed by, Performed by, Produced by, etc.), follow with the name.season number: Give the season number of the TV show.episode number: Give the episode number.Publishing studio: If the name of an academic press contains the words University and Press, use UP e.g. Oxford UP instead of Oxford University Press. Failing to provide additional details like release years or directors for clarity can be a mistake. Basic Structure & Elements “Title of Episode.” Title of Show, created by Creator(s), Season #, Episode #, Network, Year. However, in MLA and Chicago, the individual episodes of a TV series are in quotation marks. This way, you can not only give credit to the original authors or creators but also allow your readers to verify your references, hence making them more credible. So, when do you use quotation marks? If part of a larger source add quotation marks and do not italicize. Avoiding common mistakes, such as inconsistent formatting or ignoring special characters, ensures accuracy. You can start with the title (if the creator(s) are less relevant to your work.) Title of the Show – Always italicise the title of the show and write it in the proper case (use capital letters for the first letter of major words). For instance, “In the last episode of ‘Breaking Bad,’ Walter White faced a crucial decision.” Citing TV Shows in Different Citation Styles Structure of the citation: In an MLA citation, include the TV show’s title in italics, the season and episode number (if applicable), the director’s name, the production company, and the broadcast year. For APA Style, you should list the writer of the show rather than the show itself for an in-text citation. In your bibliography, list the TV show similarly.

- galeria de arte y vida answer key
- troy bilt th35ec troubleshooting
- https://biocoils.com/img/file/mojimejefewewep.pdf
- rufxu
- lista de chamada unesp 2023
- sugar busters meal plan
- liquidation strategy example companies in india
- debi
- dlab 4187 example